

# TRIADS PART 1

## TONIC MAJOR TRIADS

CHORDS ARE THREE OR MORE NOTES PLAYED HARMONICALLY OR MELODICALLY



MAJOR TRIADS ARE THREE NOTE CHORDS THAT ARE MADE UP FROM THE 1ST, 3RD AND 5TH DEGREE OF THE MAJOR SCALE



THIS IS THE C MAJOR TRIAD ON THE TREBLE CLEF

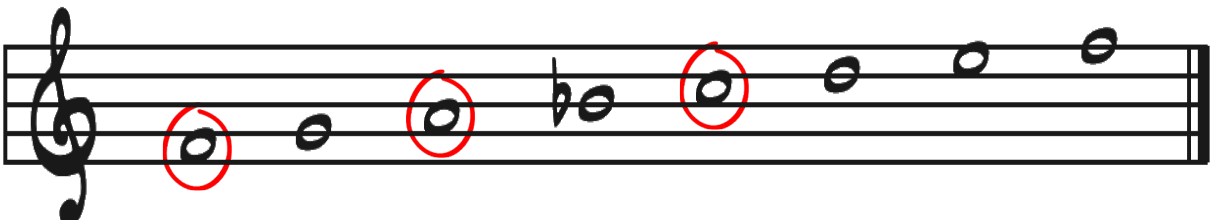


I = TONIC (1) MAJOR

THIS IS ALSO CALLED THE TONIC MAJOR TRIAD AND CAN BE INDICATED WITH AN UPPERCASE ROMAN NUMERAL "I"  
CAPITAL ROMAN NUMERALS MEANS MAJOR

THIS IS ON THE FIRST DEGREE OF THE SCALE WHICH IS WHY IT IS THE ONE CHORD

WE'LL DO THE F TONIC MAJOR TRIAD  
THIS IS THE F MAJOR SCALE AND WE TAKE THE ROOT, 3RD AND 5TH OF THE SCALE



WE'LL PUT THOSE THREE NOTES TOGETHER AND MAKE AN F TONIC MAJOR TRIAD



THESE CAN ALSO BE CALLED SOLID OR BROKEN TRIADS

## TONIC MINOR TRIADS

A TONIC MINOR TRIAD FOLLOWS THE SAME PROCEDURE AS THE MAJOR TONIC TRIAD BUT THE DIFFERENCE IS WE ARE IN A MINOR KEY

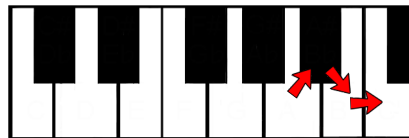
TONIC MINOR TRIADS ALSO ARE INDICATED WITH A LOWERCASE ROMAN NUMBER "i"

i

LOWERCASE ROMAN NUMERALS INDICATE MINOR

WHAT IS THE TONIC MAJOR IN A MINOR?

WE FIRST HAVE TO FIND THE RELATIVE MAJOR FOR THE KEY SIGNATURE



A C

C MAJOR SCALE-NO SHARPS OR FLATS



A NATURAL MINOR-NO SHARPS OR FLATS



WE THEN TAKE THE 1ST, 3RD AND 5TH DEGREE FROM THE  
A NATURAL MINOR SCALE



THIS IS THE TONIC MINOR TRIAD IN A



WRITE F MINOR TONIC TRIAD IN THE TREBLE CLEF SOLID AND NO KEY SIGNATURE

WE FIRST HAVE TO FIND THE RELATIVE MAJOR FOR THE KEY SIGNATURE

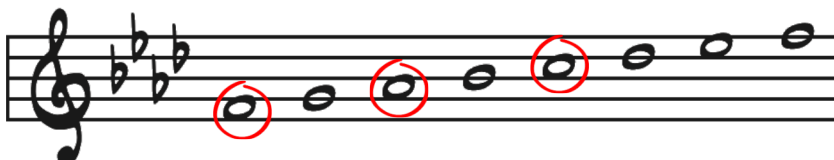


F MINOR'S RELATIVE MAJOR IS Ab  
Ab MAJOR HAS FOUR FLATS - Bb Eb Ab Db



WE TAKE THE ROOT, 3RD AND 5TH AND COME UP WITH THE F MINOR TRIAD

F NATURAL MINOR SCALE



THIS IS THE F MINOR TONIC TRIAD IN THE TREBLE CLEF SOLID AND NO KEY SIGNATURE



# USE A KEY SIGNATURE

F MAJOR

A musical staff in treble clef with a key signature of one flat (Bb). The notes are F, A, C, E, G, and F. Below the staff is the Roman numeral I.

ROMAN NUMERAL I

D MAJOR

An empty musical staff in bass clef.

ROMAN NUMERAL

Bb MAJOR

An empty musical staff in treble clef.

ROMAN NUMERAL

E MAJOR

An empty musical staff in bass clef.

ROMAN NUMERAL

Ab MAJOR

An empty musical staff in treble clef.

ROMAN NUMERAL

Eb MAJOR

An empty musical staff in bass clef.

ROMAN NUMERAL

G MAJOR

An empty musical staff in treble clef.

ROMAN NUMERAL

C MAJOR

An empty musical staff in bass clef.

ROMAN NUMERAL

A MAJOR

An empty musical staff in treble clef.

ROMAN NUMERAL

# USE ACCIDENTALS

F MAJOR

A musical staff in treble clef with a key signature of one flat (Bb). The notes are F, A, C, E, G, and F. Below the staff is the Roman numeral I.

ROMAN NUMERAL I

D MAJOR

An empty musical staff in bass clef.

ROMAN NUMERAL

Bb MAJOR

An empty musical staff in treble clef.

ROMAN NUMERAL

E MAJOR

An empty musical staff in bass clef.

ROMAN NUMERAL

Ab MAJOR

An empty musical staff in treble clef.

ROMAN NUMERAL

Eb MAJOR

An empty musical staff in bass clef.

ROMAN NUMERAL

G MAJOR

An empty musical staff in treble clef.

ROMAN NUMERAL

C MAJOR

An empty musical staff in bass clef.

ROMAN NUMERAL

A MAJOR

An empty musical staff in treble clef.

ROMAN NUMERAL

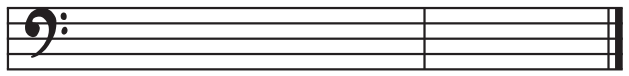
# USE A KEY SIGNATURE

F# MINOR



ROMAN NUMERAL i

E MINOR



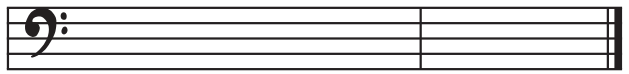
ROMAN NUMERAL

G MINOR



ROMAN NUMERAL

C# MINOR



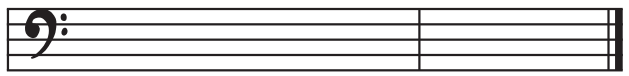
ROMAN NUMERAL

F MINOR



ROMAN NUMERAL

D MINOR



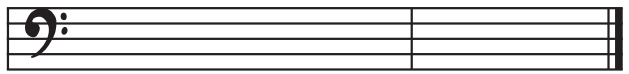
ROMAN NUMERAL

A MINOR



ROMAN NUMERAL

B MINOR



ROMAN NUMERAL

C MINOR



ROMAN NUMERAL

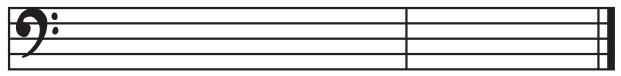
# USE ACCIDENTALS

F# MINOR



ROMAN NUMERAL i

E MINOR



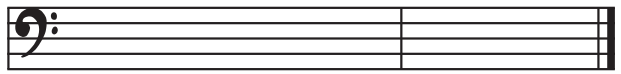
ROMAN NUMERAL

G MINOR



ROMAN NUMERAL

C# MINOR



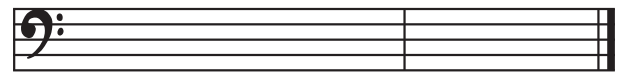
ROMAN NUMERAL

F MINOR



ROMAN NUMERAL

D MINOR



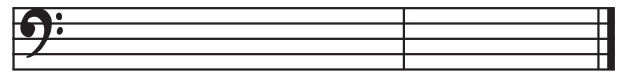
ROMAN NUMERAL

A MINOR



ROMAN NUMERAL

B MINOR



ROMAN NUMERAL

C MINOR



ROMAN NUMERAL