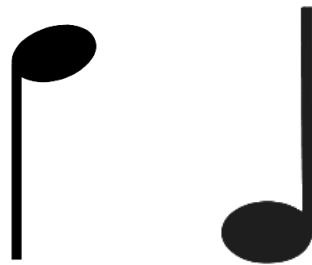


# NOTES, RESTS, DOTTED NOTES AND LEDGER LINES

STEMS ARE ADDED TO THE NOTES AND CAN BE EITHER UP  
OR DOWN AS WELL AS TO THE LEFT OR RIGHT SIDE



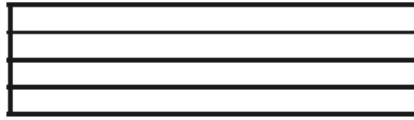
WHEN THE STEM IS POINTING DOWN THE NOTEHEAD IS TO THE RIGHT



WHEN THE STEM IS POINTING UP THE NOTEHEAD IS TO THE LEFT



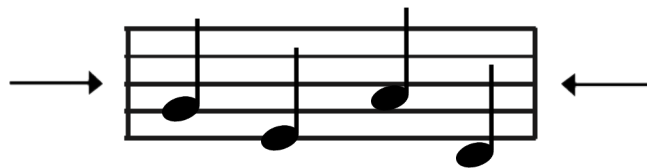
**OUR STAFF CONSISTS OF FIVE LINES**



**WHEN THE NOTE IS ABOVE THE MIDDLE LINE, THE STEM WILL GO DOWN**



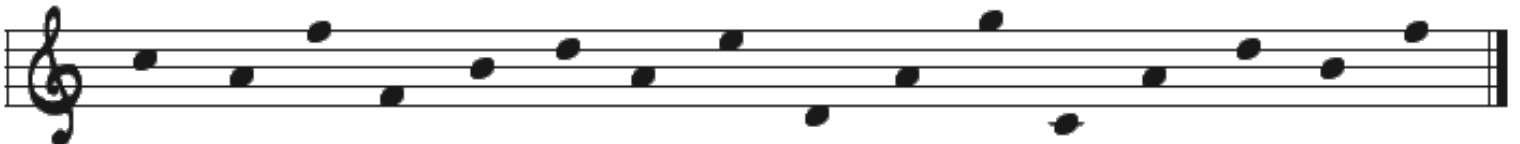
**WHEN THE NOTE IS BELOW THE MIDDLE LINE, THE STEM WILL GO UP**



**WHEN THE NOTE IS ON THE MIDDLE IT CAN GO EITHER UP OR DOWN**



**1) ADD STEMS TO THE FOLLOWING NOTES**













WHEN A FLAG IS ADDED TO THE NOTE IT IS ALWAYS ON THE RIGHT SIDE



2) ADD STEMS TO ALL THESE NOTES EIGHTH NOTES



## NOTES AND EQUIVALENT RESTS

WHOLE NOTE		4 BEATS		WHOLE REST
HALF NOTE		2 BEATS		HALF REST
QUARTER NOTE		1 BEAT		QUARTER REST
EIGHTH NOTE		1/2 BEAT		EIGHTH REST
SIXTEENTH NOTE		1/4 BEAT		SIXTEENTH REST

**DOTS AFFECT THE OVERALL RHYTHMIC VALUE OF THE NOTE**

**THE DOT IS ALWAYS ON THE RIGHT SIDE OF THE NOTE**



**IF A NOTE IS ON THE LINE, WE PLACE THE DOT IN THE MIDDLE OF THE SPACE IMMEDIATELY AFTER THE NOTE**



**IF THE NOTE IS ON THE SPACE, WE PLACE THE DOT IN THE MIDDLE OF THE SPACE AFTER THE NOTE**



**3) ADD STEMS AND DOTS AFTER EACH NOTE**



**WHEN WE HAVE A DOT, WE TAKE THE VALUE OF THE NOTE AND ADD HALF OF ITS VALUE**



WHOLE NOTE EQUALS 4 BEATS  
HALF OF 4 IS 2  
DOTTED WHOLE NOTE EQUALS 6 BEATS


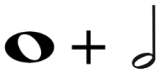





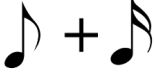

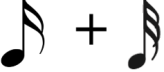


A HALF NOTE EQUALS 2 BEATS  
HALF OF 2 IS 1  
DOTTED HALF NOTE EQUALS 3 BEATS



A QUARTER NOTE EQUALS 1 BEATS  
HALF OF 1 IS 1/2  
DOTTED QUARTER NOTE EQUALS 1 1/2 BEATS















# LIST OF DOTTED NOTES AND THEIR VALUES

		6 BEATS
		3 BEATS
		1 1/2 BEATS
		3/4 BEAT
		3/8 OF A BEAT

## 4) WRITE HOW MANY BEATS EACH NOTE GETS

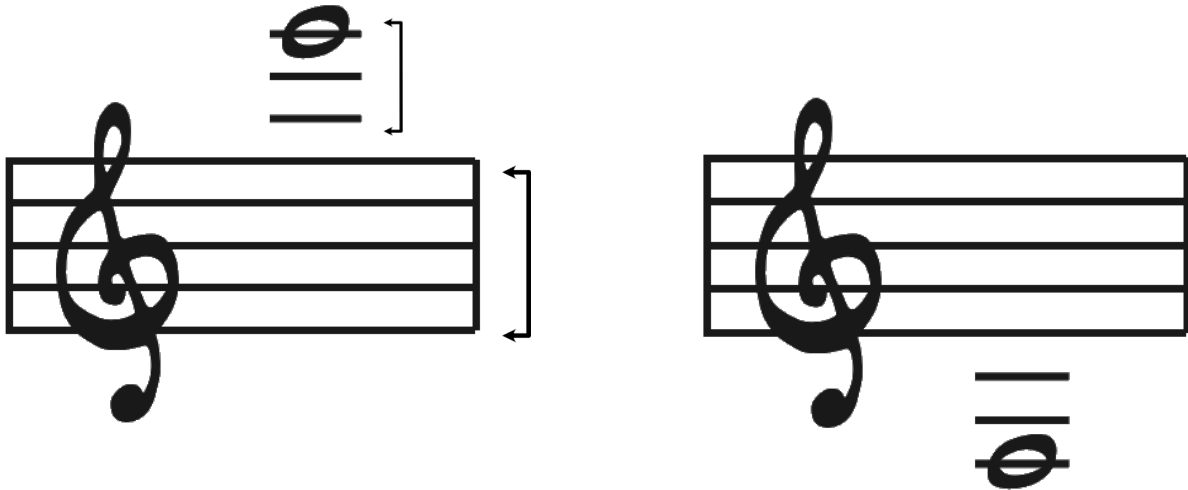


## 5) NAME THE NOTE OR REST AND HOW MANY BEATS

	=		=
	=		=
	=		=
	=		=
	=		=
	=		=
	=		=

- LEDGER LINES EXTEND THE RANGE OF THE STAFF

- THEY MUST BE SPACED THE SAME HEIGHT AS THE STAFF LINES



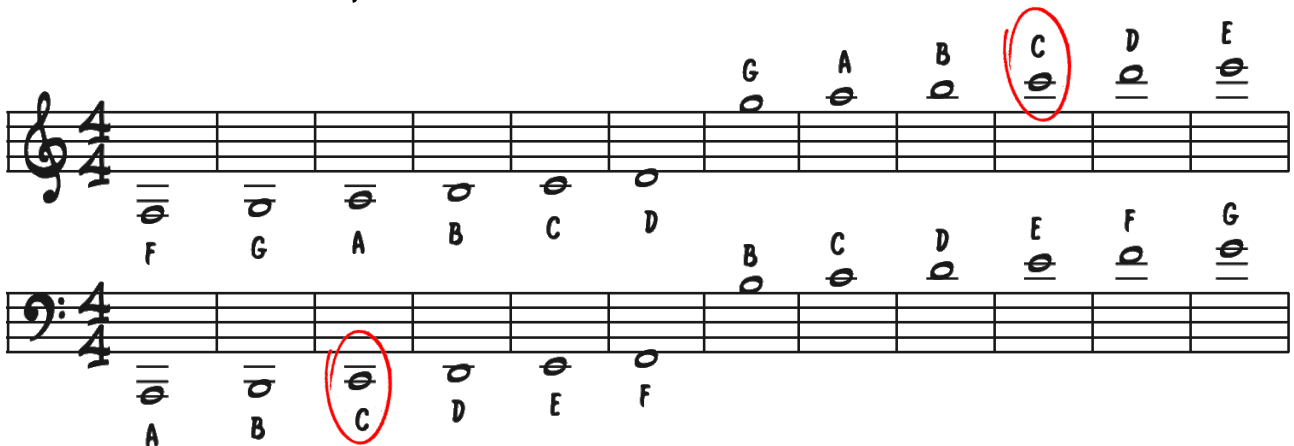
IF THE NOTE IS ON A SPACE, WE DO NOT PLACE THE LEDGER LINE ON THE OUTSIDE OF THE NOTE



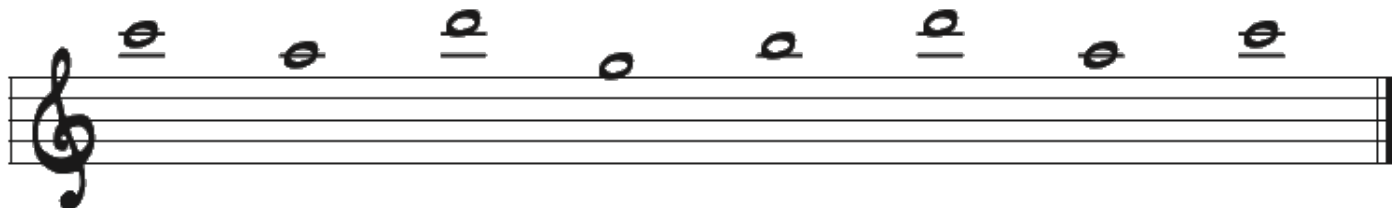
LEDGER LINED NOTES IN THE TREBLE AND BASS CLEF.

TWO LEDGER LINES ABOVE THE TREBLE CLEF IS C

TWO LEDGER LINES BELOW THE BASS CLEF IS C



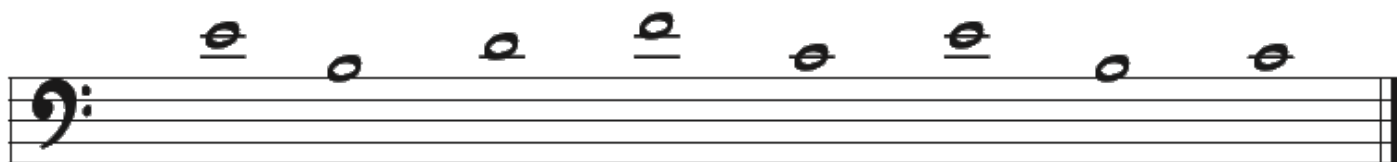
6) NAME THE NOTES ABOVE THE STAFF IN THE TREBLE CLEF



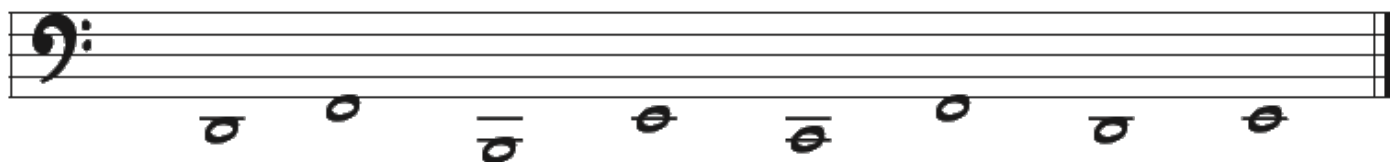
7) NAME THE NOTES BELOW THE STAFF IN THE TREBLE CLEF



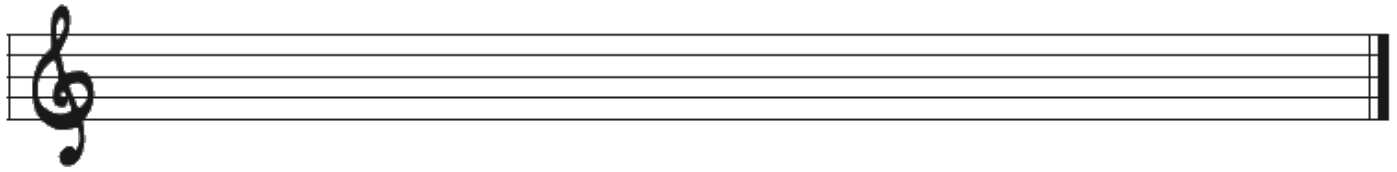
8) NAME THE NOTES ABOVE THE STAFF IN THE BASS CLEF



9) NAME THE NOTES BELOW THE STAFF IN THE BASS CLEF

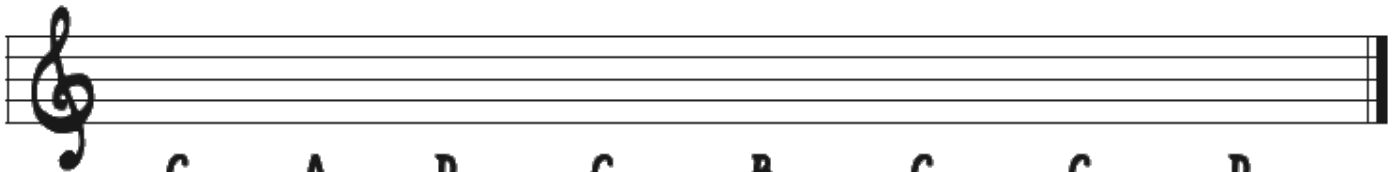


10) WRITE THE LEDGER LINE NOTE BELOW THE STAFF IN THE TREBLE CLEF



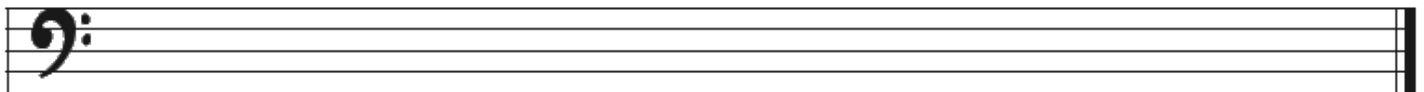
C D A D G C A B

11) WRITE THE LEDGER LINE NOTE ABOVE THE STAFF IN THE TREBLE CLEF



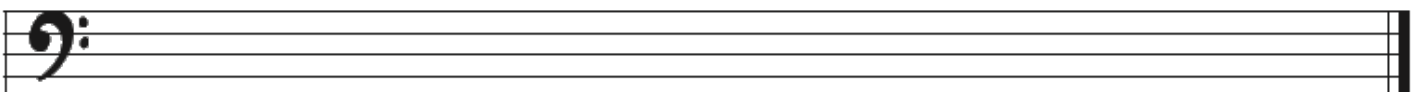
C A D G B C G D

12) WRITE THE LEDGER LINE NOTE BELOW THE STAFF IN THE BASS CLEF



C F D G E C F D

13) WRITE THE LEDGER LINE NOTE ABOVE THE STAFF IN THE BASS CLEF



F C E B D F C E