

IDENTIFY THE KEY OF A MELODY

THERE ARE A FEW STEPS INVOLVED IN FINDING THE KEY OF A MELODY

-THE FIRST STEP IS THE KEY SIGNATURE

-FROM HERE WE CAN FIND OUT THE MAJOR OR MINOR KEY

-THE NEXT STEP IS LOOK FOR ACCIDENTALS

-IF THERE ARE NO ACCIDENTALS THEN WE COULD BE IN A MAJOR KEY

-IF THERE IS A RAISED NOTE THEN THOSE NOTES COULD BE THE RAISED SEVENTH(HARMONIC MINOR) OR RAISED SIXTH AND SEVENTH(MELODIC MINOR)

-THE LAST STEP IS TO LOOK AT THE LAST NOTE

-IF THE KEY SIGNATURE HAS NO SHARPS OR FLATS THEN WE ARE IN C MAJOR OR A MINOR

-WE THEN LOOK AT THE LAST NOTE AND IF IT IS C THEN WE ARE IN C MAJOR, IF IT IS AN A THEN WE ARE IN A MINOR

CHECK KEY SIGNATURE FOR MAJOR AND MINOR KEYS
LOOK FOR RAISED 7TH OR RAISED 6TH AND 7TH
LOOK AT THE LAST NOTE TO CONFIRM KEY

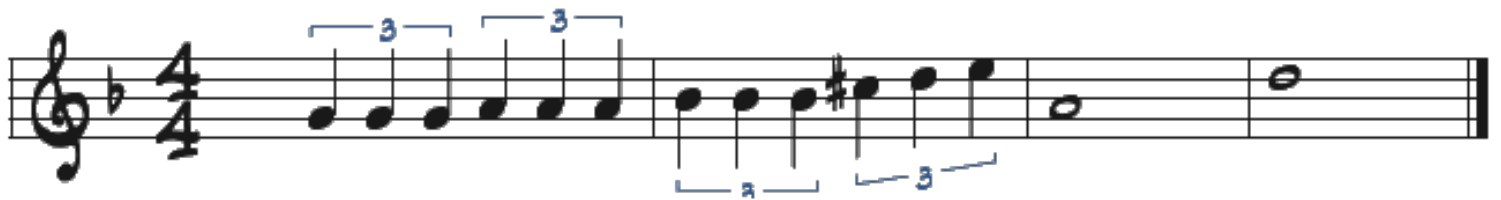
WE'LL TRY AN EXAMPLE WITH GREEN DAY'S SONG "TIME OF YOUR LIFE"

- 1) THE KEY SIGNATURE HAS ONE SHARP SO IT HAS TO BE EITHER G MAJOR OR E MINOR
- 2) THERE AREN'T ANY ACCIDENTALS SO THAT IS INSINUATING A MAJOR KEY
- 3) THE FINAL NOTE IS G SO WE ARE SAFE TO ASSUME THIS SONG IS IN G MAJOR



NAME THE FOLLOWING KEYS AND SCALE (MAJOR, HARMONIC MINOR OR MELODIC MINOR)

1) CONSUELO VALAZQUEZ - BESAME MUCHO



KEY _____ SCALE _____

2) GEORGE DAVID WEISS - CAN'T HELP FALLING IN LOVE WITH YOU



KEY _____ SCALE _____

3) NO DOUBT - DON'T SPEAK



KEY _____ SCALE _____

4) ANDREW LLOYD WEBBER - MEMORY



KEY _____ SCALE _____

5) THE ROLLING STONES - PAINT IT BLACK



KEY _____ SCALE _____

6) TRADITIONAL - GREENSLEEVES



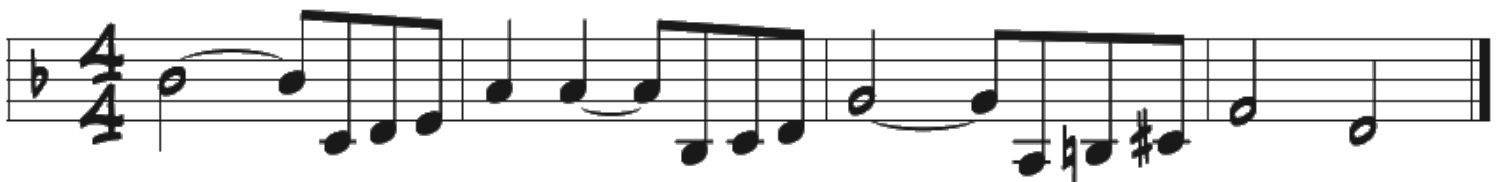
KEY _____ SCALE _____

7) BILLY JOEL - SHE'S ALWAYS A WOMAN TO ME



KEY _____ SCALE _____

8) JOSEPH KOSMA - AUTUMN LEAVES



KEY _____ SCALE _____