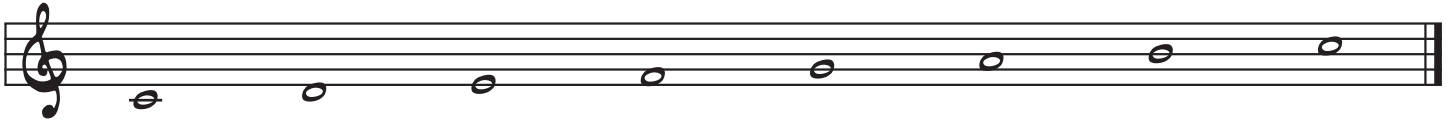
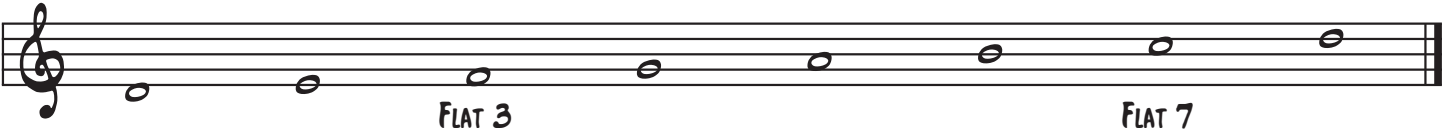


C MAJOR MODES

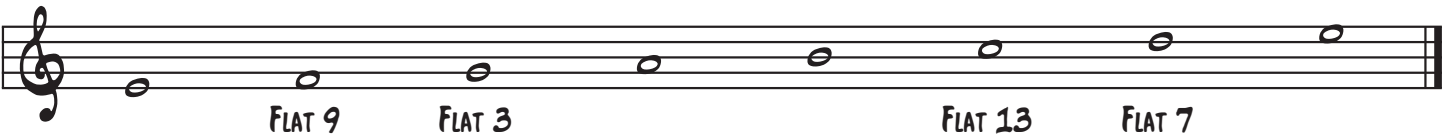
IONIAN



DORIAN



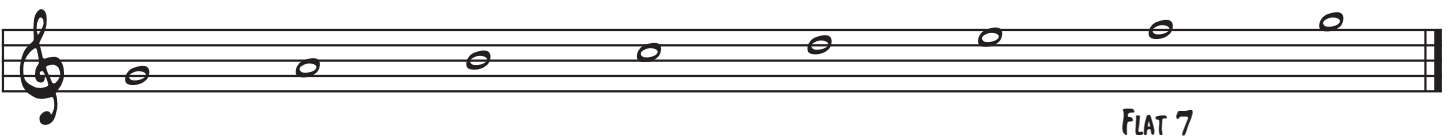
PHRYGIAN



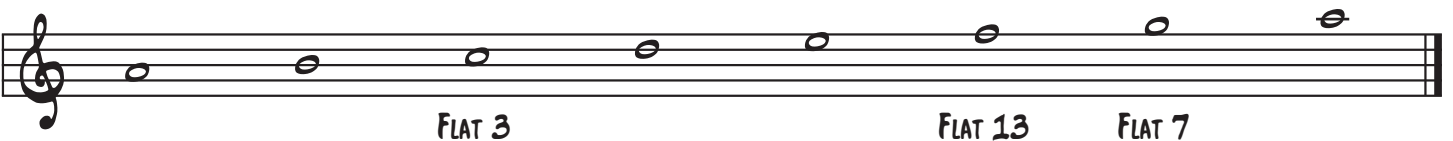
LYDIAN



MIXOLYDIAN



AEOLIAN



LOCRIAN

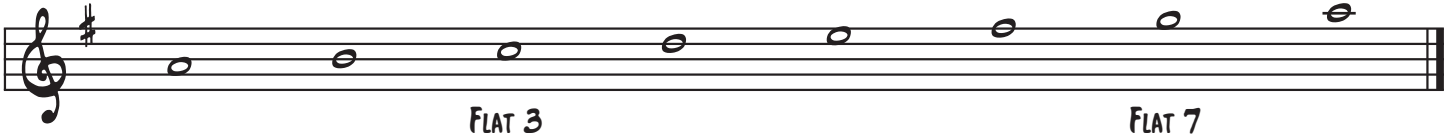


G MAJOR MODES

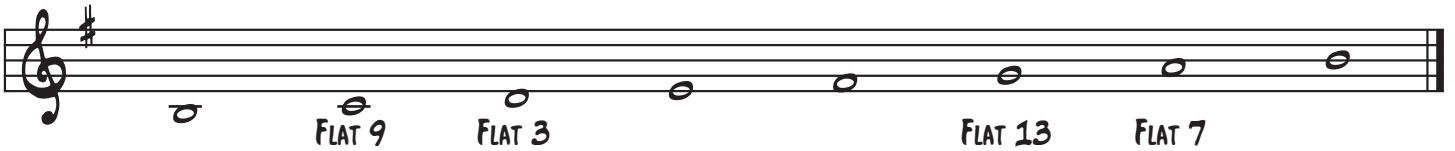
IONIAN



DORIAN



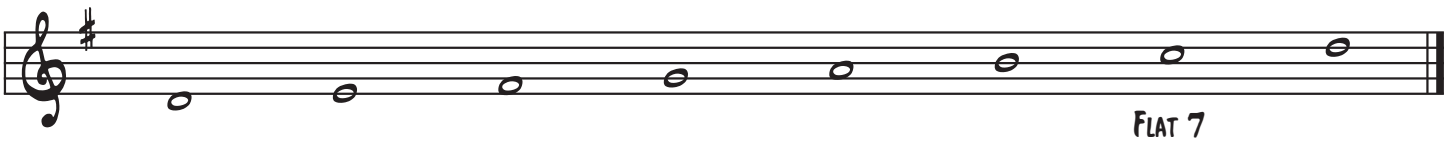
PHRYGIAN



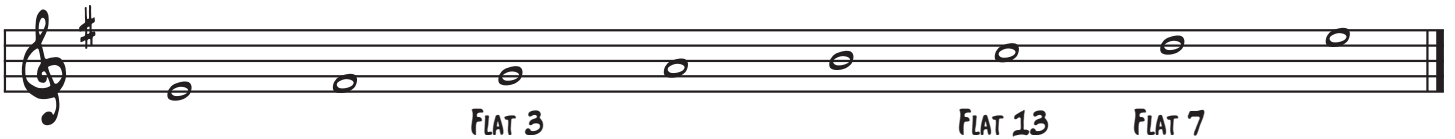
LYDIAN



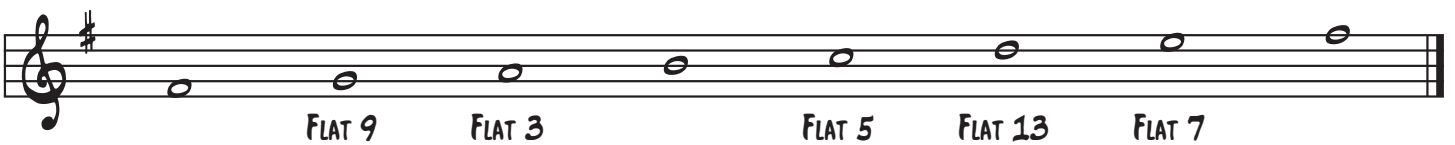
MIXOLYDIAN



AEOLIAN



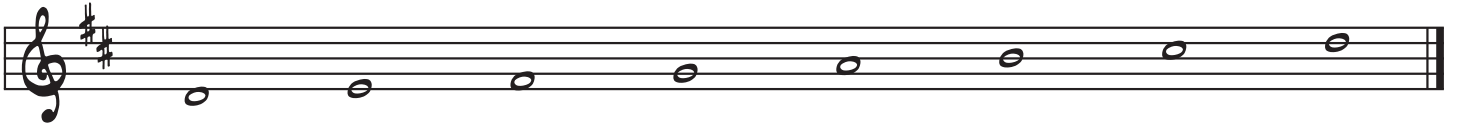
LOCRIAN



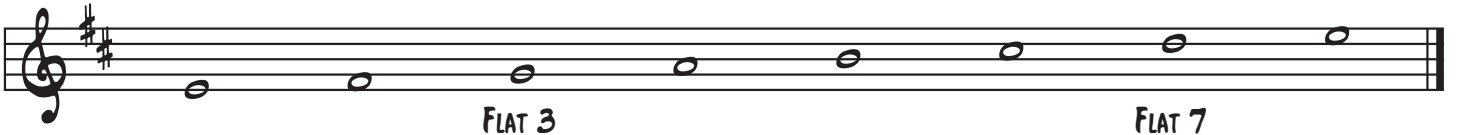
D MAJOR MODES

IONIAN

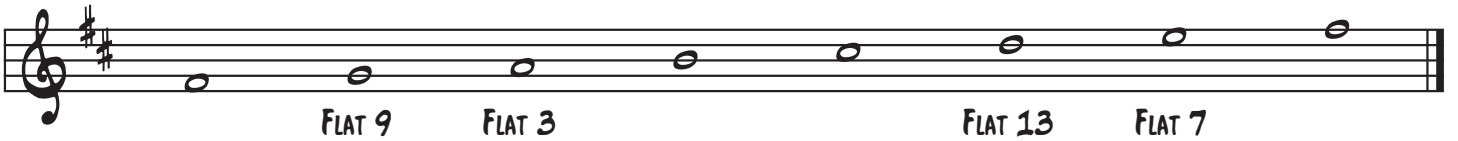
3



DORIAN



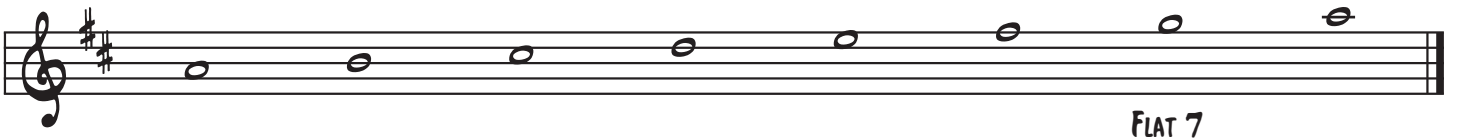
PHRYGIAN



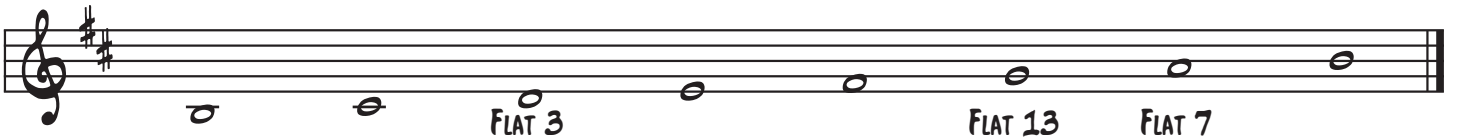
LYDIAN



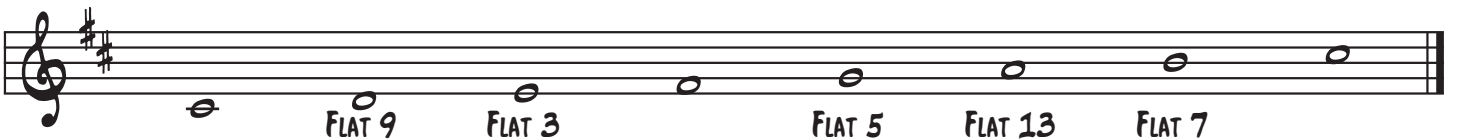
MIXOLYDIAN



AEOLIAN

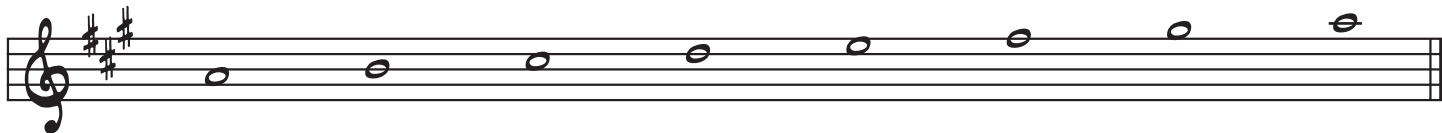


LOCRIAN

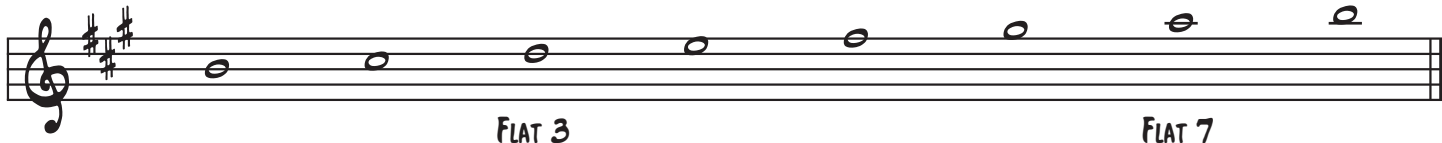


A MAJOR MODES

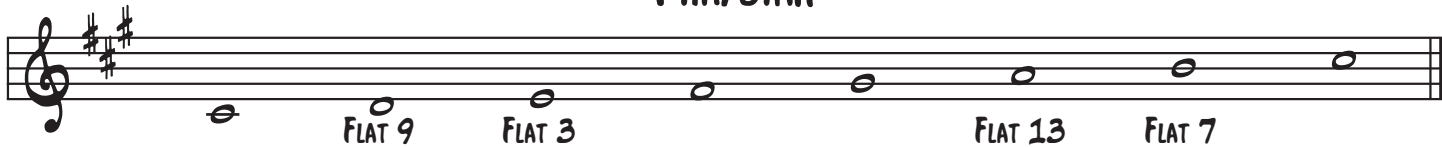
IONIAN



DORIAN



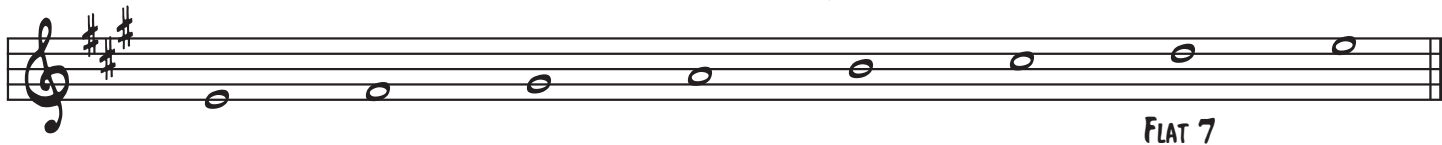
PHRYGIAN



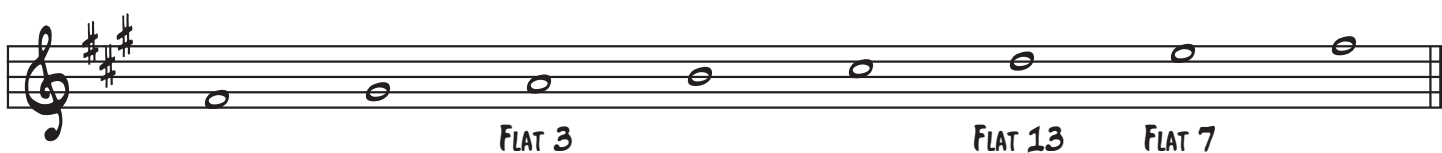
LYDIAN



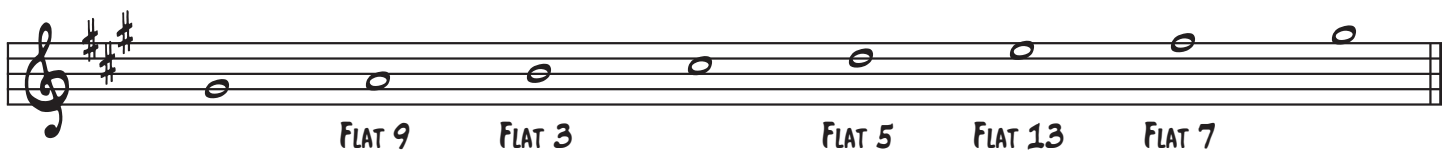
MIXOLYDIAN



AEOLIAN



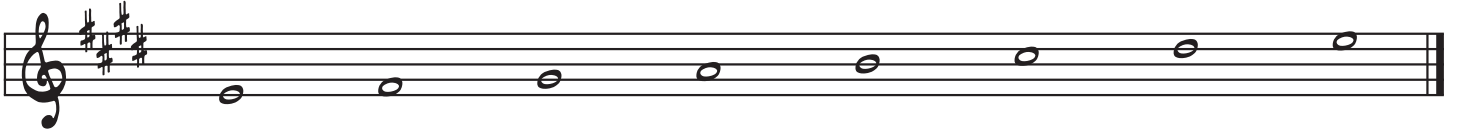
LOCRIAN



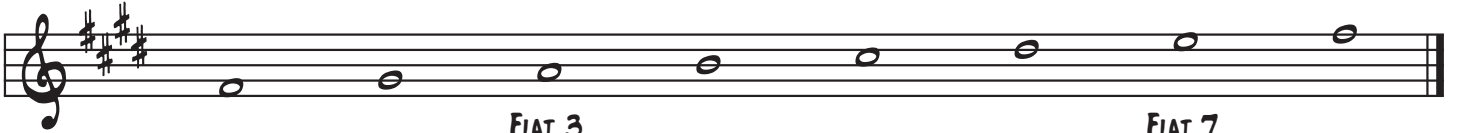
E MAJOR MODES

IONIAN

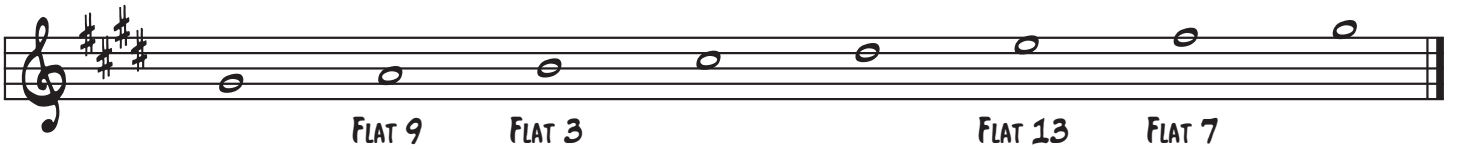
5



DORIAN



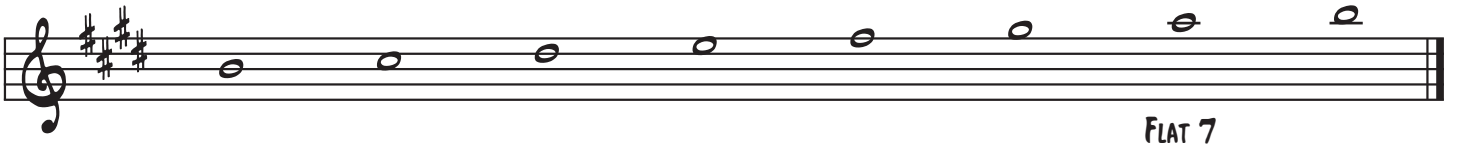
PHRYGIAN



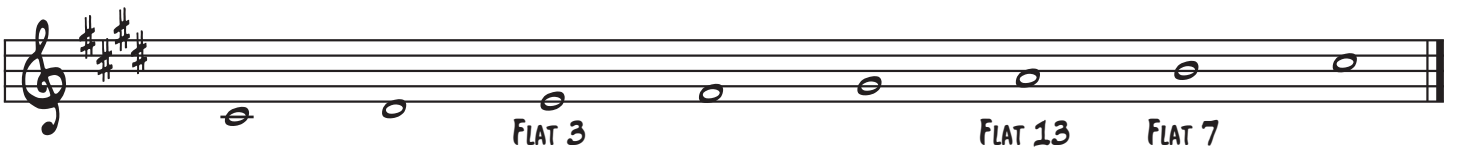
LYDIAN



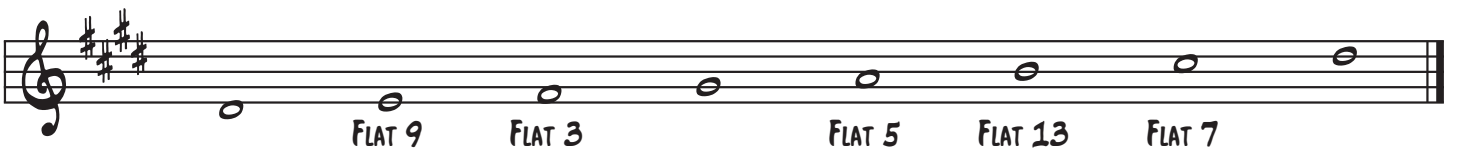
MIXOLYDIAN



AEOLIAN

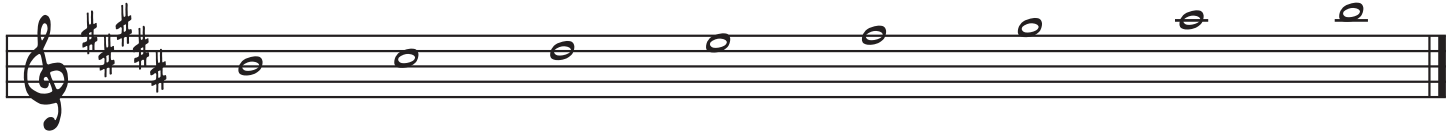


LOCRIAN

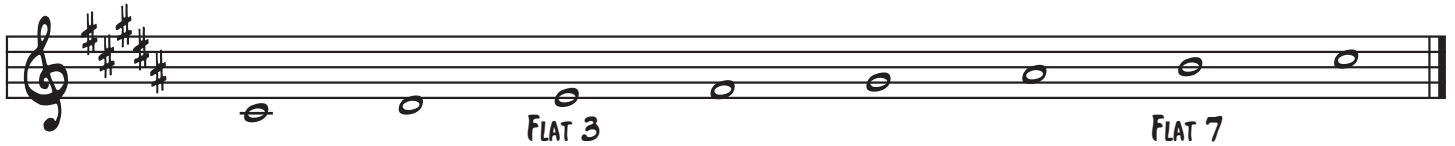


B MAJOR MODES

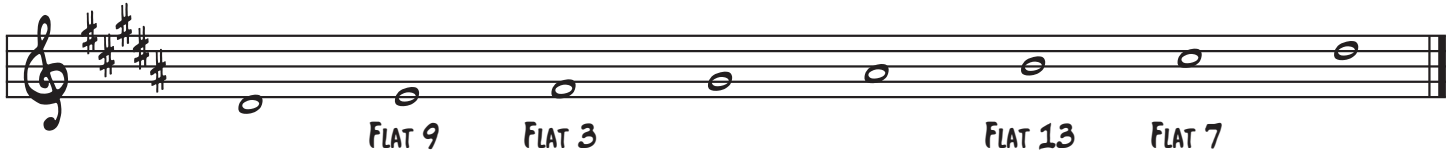
IONIAN



DORIAN



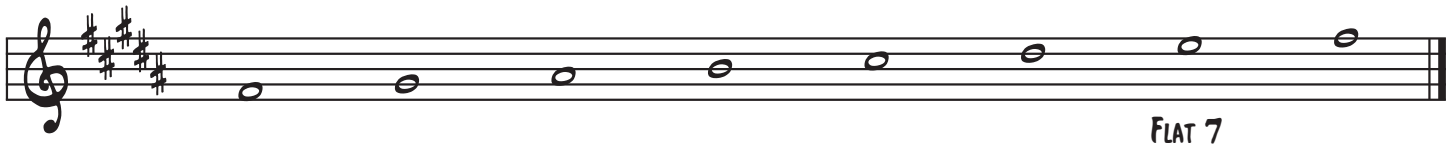
PHRYGIAN



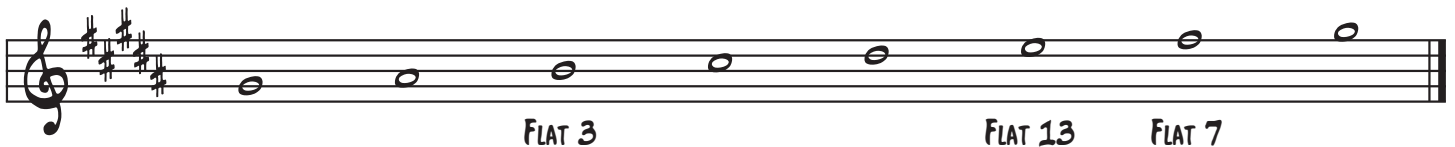
LYDIAN



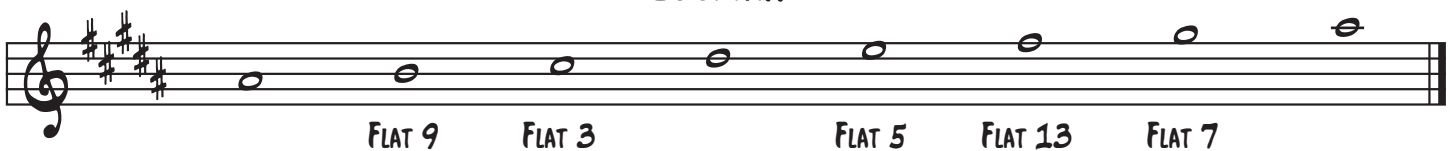
MIXOLYDIAN



AEOLIAN



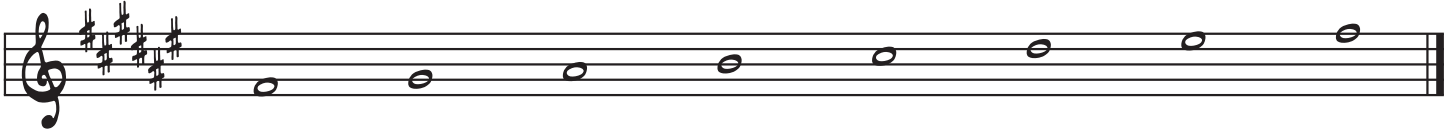
LOCRIAN



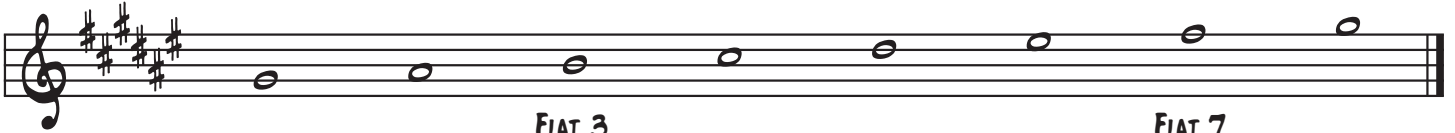
F# MAJOR MODES

IONIAN

7



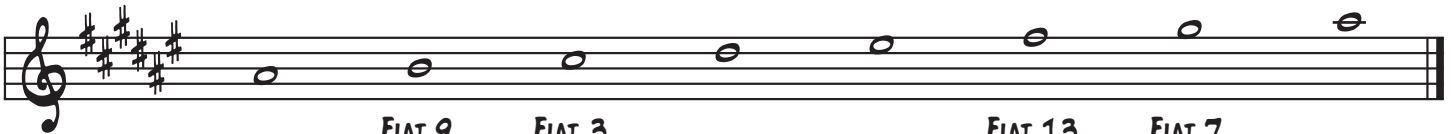
DORIAN



FLAT 3

FLAT 7

PHRYGIAN



FLAT 9

FLAT 3

FLAT 13

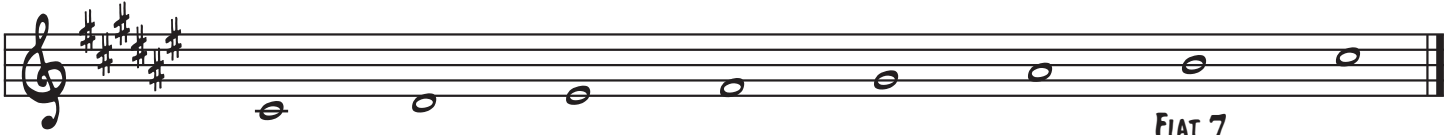
FLAT 7

LYDIAN



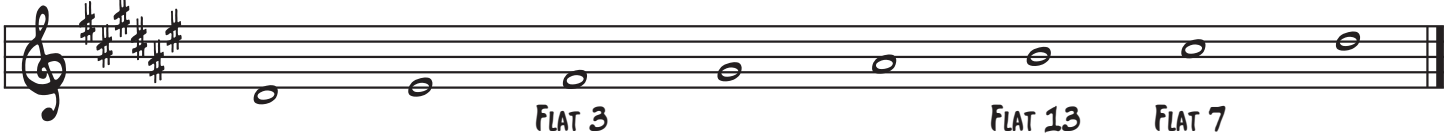
SHARP 11

MIXOLYDIAN



FLAT 7

AEOLIAN

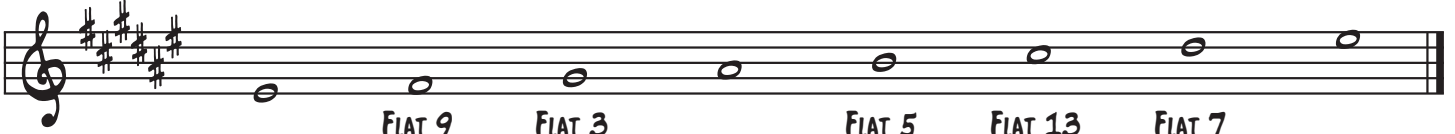


FLAT 3

FLAT 13

FLAT 7

LOCRIAN



FLAT 9

FLAT 3

FLAT 5

FLAT 13

FLAT 7

C# MAJOR MODES

IONIAN

A musical staff in treble clef with a key signature of two sharps (F# and C#). The notes of the Ionian mode are: C#4, D#4, E5, F#5, G#5, A#5, B6. The notes are written as whole notes on a five-line staff.

DORIAN

A musical staff in treble clef with a key signature of two sharps (F# and C#). The notes of the Dorian mode are: C#4, D#4, E5, F5 (labeled FLAT 3), G#5, A#5, B6 (labeled FLAT 7). The notes are written as whole notes on a five-line staff.

PHRYGIAN

A musical staff in treble clef with a key signature of two sharps (F# and C#). The notes of the Phrygian mode are: C#4, D5 (labeled FLAT 9), E5, F5 (labeled FLAT 3), G#5, A#5, B6 (labeled FLAT 13), C#7 (labeled FLAT 7). The notes are written as whole notes on a five-line staff.

LYDIAN

A musical staff in treble clef with a key signature of two sharps (F# and C#). The notes of the Lydian mode are: C#4, D#4, E5, F#5 (labeled SHARP 11), G#5, A#5, B6. The notes are written as whole notes on a five-line staff.

MIXOLYDIAN

A musical staff in treble clef with a key signature of two sharps (F# and C#). The notes of the Mixolydian mode are: C#4, D#4, E5, F#5, G#5, A#5, B6 (labeled FLAT 7). The notes are written as whole notes on a five-line staff.

AEOLIAN

A musical staff in treble clef with a key signature of two sharps (F# and C#). The notes of the Aeolian mode are: C#4, D#4, E5, F5 (labeled FLAT 3), G#5, A#5, B6 (labeled FLAT 13), C#7 (labeled FLAT 7). The notes are written as whole notes on a five-line staff.

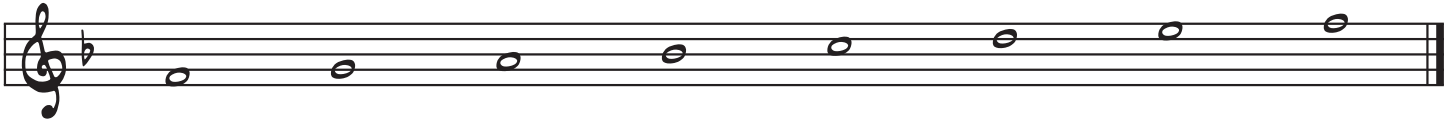
LOCRIAN

A musical staff in treble clef with a key signature of two sharps (F# and C#). The notes of the Locrian mode are: C#4, D5 (labeled FLAT 9), E5, F5 (labeled FLAT 3), G5 (labeled FLAT 5), A#5, B6 (labeled FLAT 13), C#7 (labeled FLAT 7). The notes are written as whole notes on a five-line staff.

F MAJOR MODES

IONIAN

9



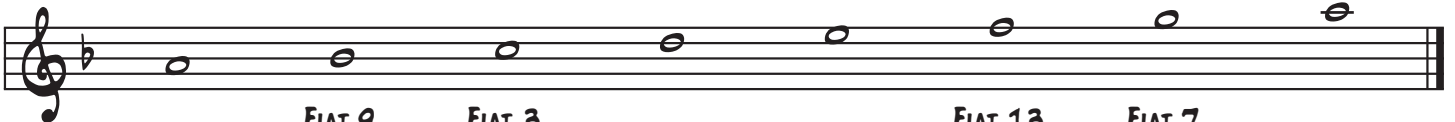
DORIAN



FLAT 3

FLAT 7

PHRYGIAN



FLAT 9

FLAT 3

FLAT 13

FLAT 7

LYDIAN



SHARP 11

MIXOLYDIAN



FLAT 7

AEOLIAN



FLAT 3

FLAT 13

FLAT 7

LOCRIAN



FLAT 9

FLAT 3

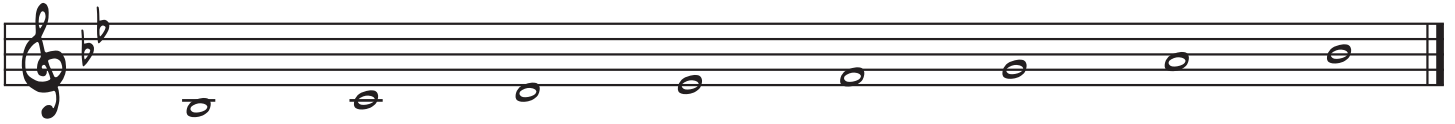
FLAT 5

FLAT 13

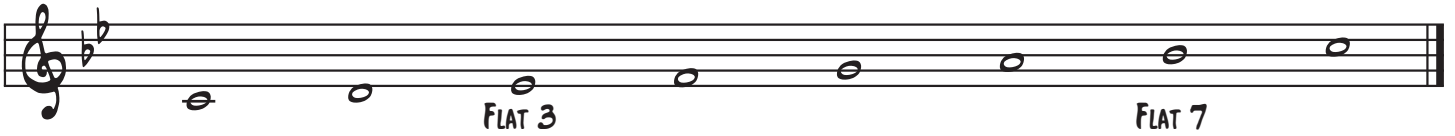
FLAT 7

B \flat MAJOR MODES

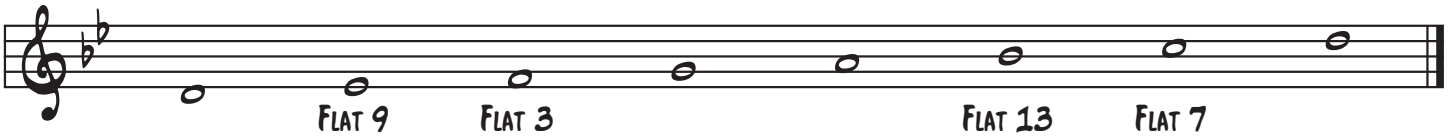
IONIAN



DORIAN



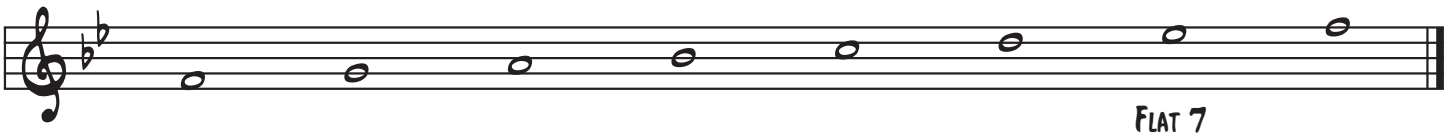
PHRYGIAN



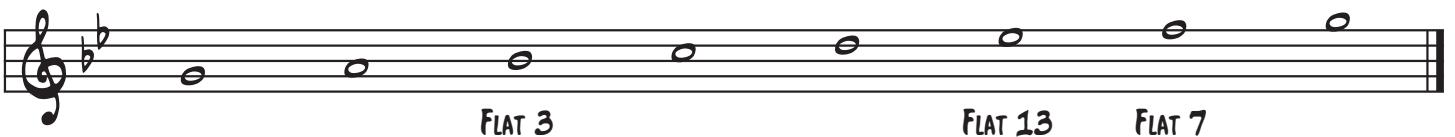
LYDIAN



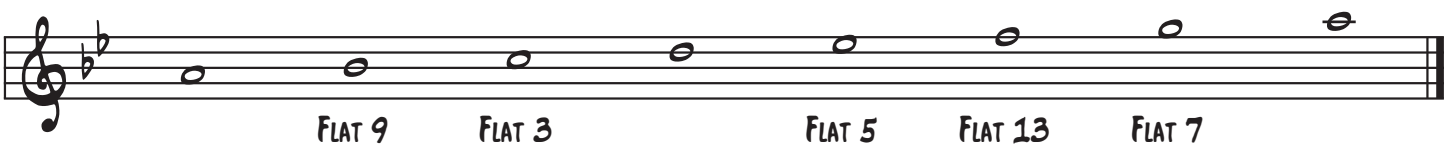
MIXOLYDIAN



AEOLIAN



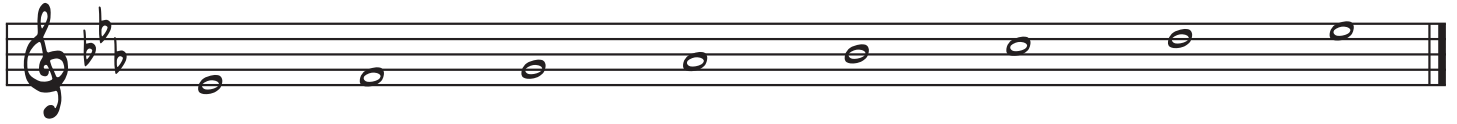
LOCRIAN



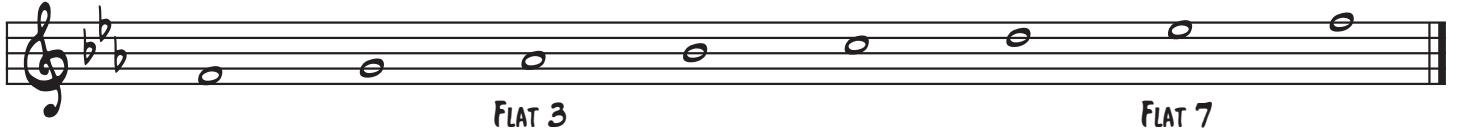
E♭ MAJOR MODES

IONIAN

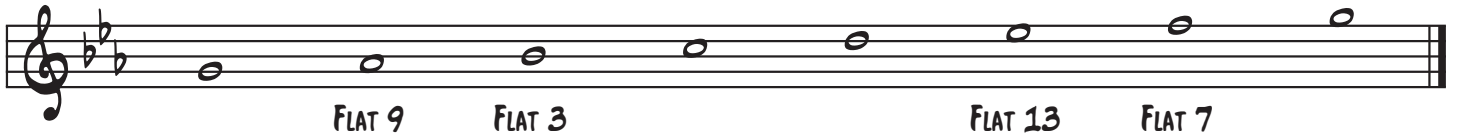
11



DORIAN



PHRYGIAN



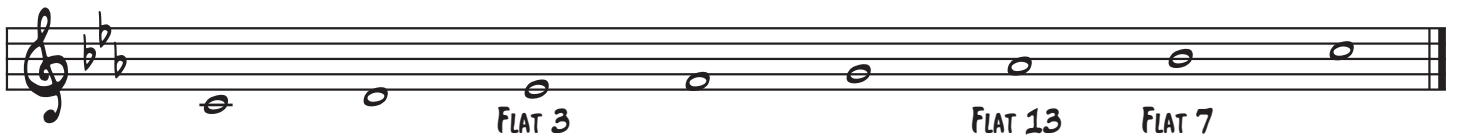
LYDIAN



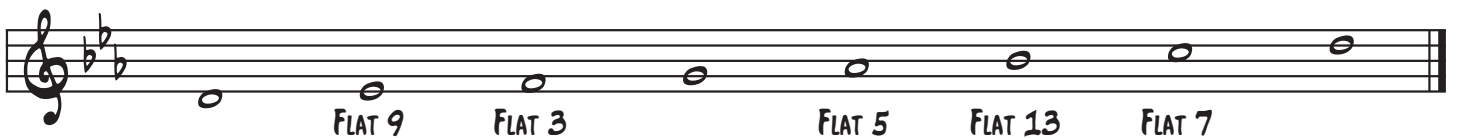
MIXOLYDIAN



AEOLIAN

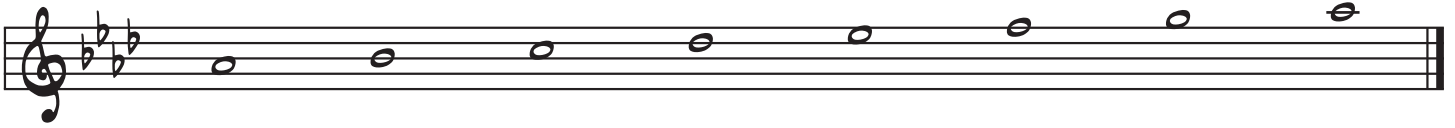


LOCRIAN

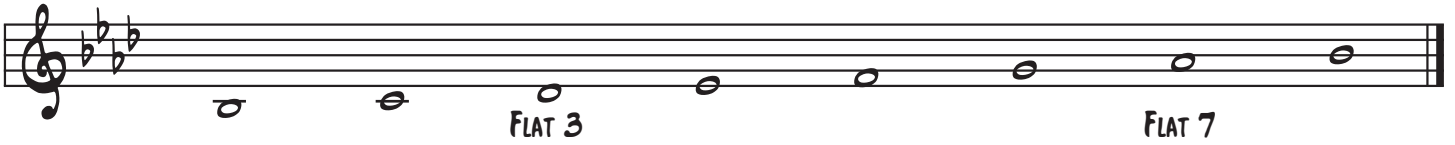


A^b MAJOR MODES

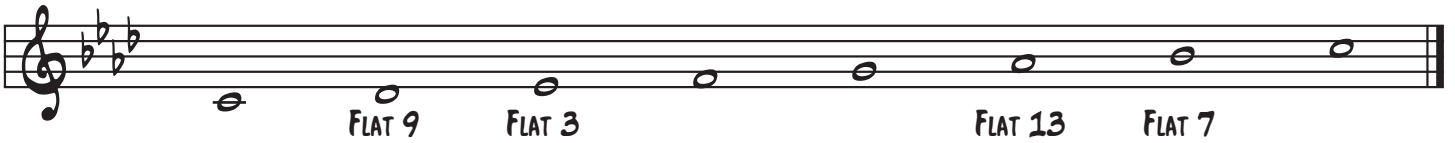
IONIAN



DORIAN



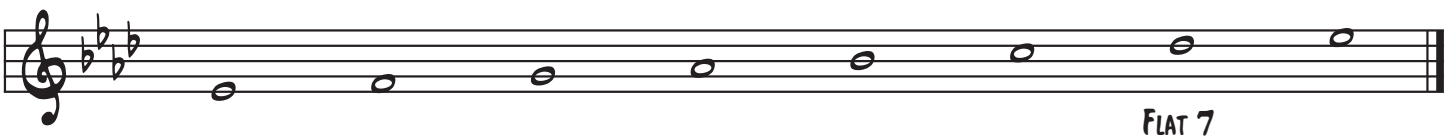
PHRYGIAN



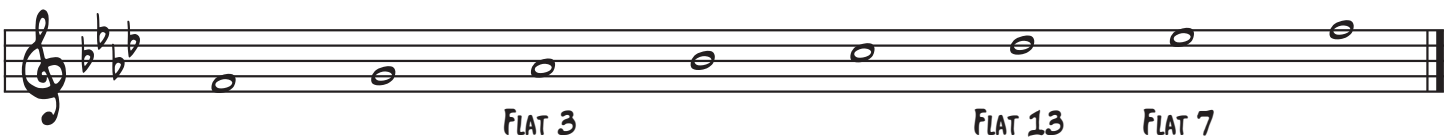
LYDIAN



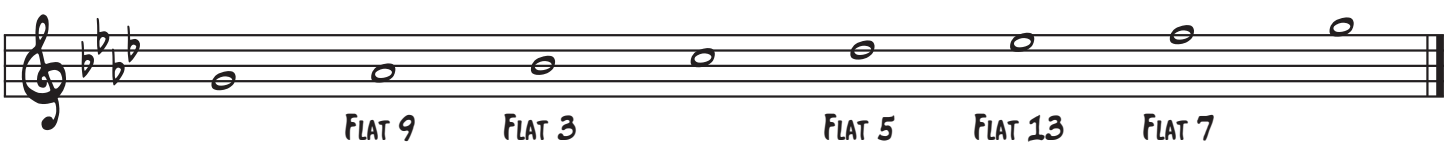
MIXOLYDIAN



AEOLIAN



LOCRIAN



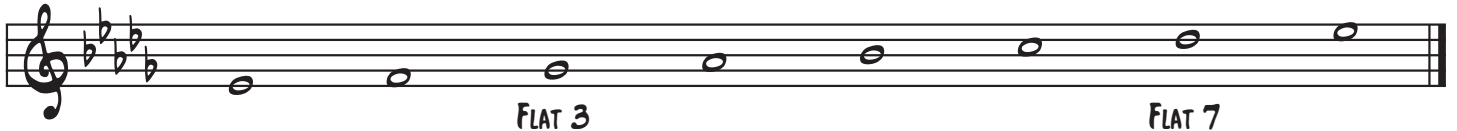
D \flat MAJOR MODES

IONIAN

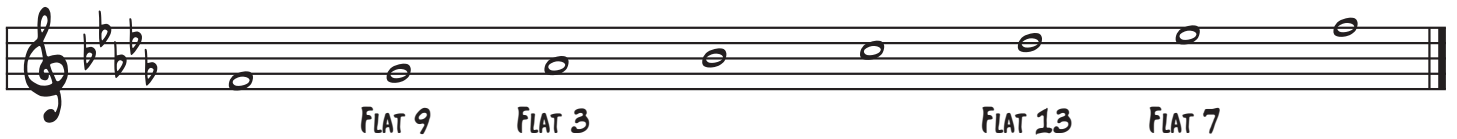
13



DORIAN



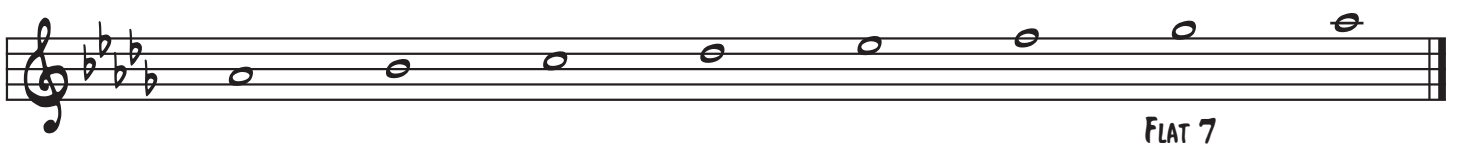
PHRYGIAN



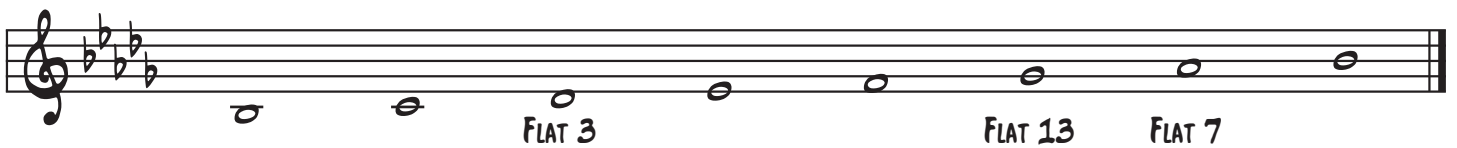
LYDIAN



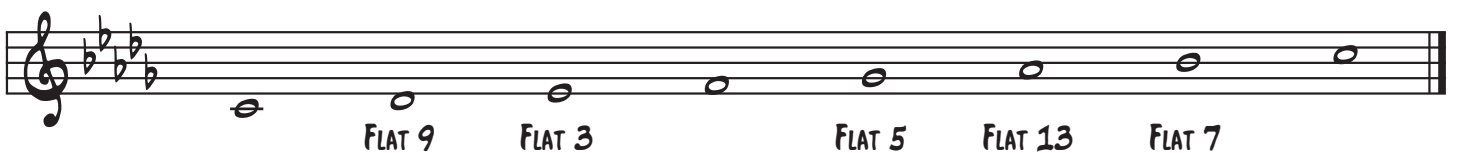
MIXOLYDIAN



AEOLIAN

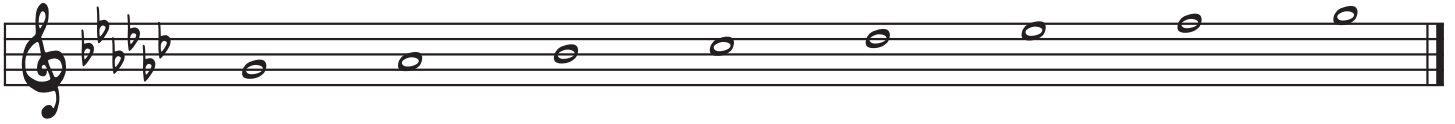


LOCRIAN

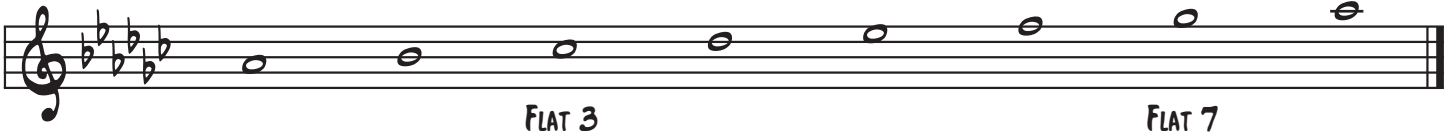


G \flat MAJOR MODES

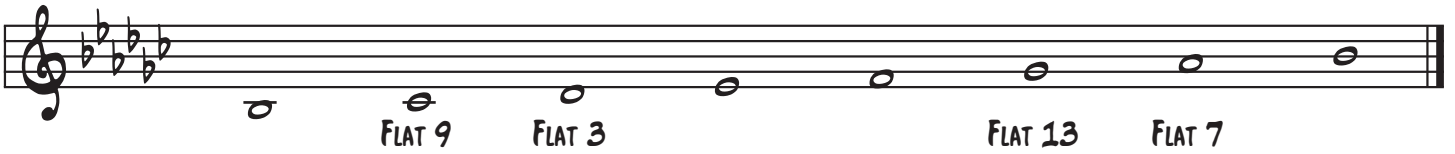
IONIAN



DORIAN



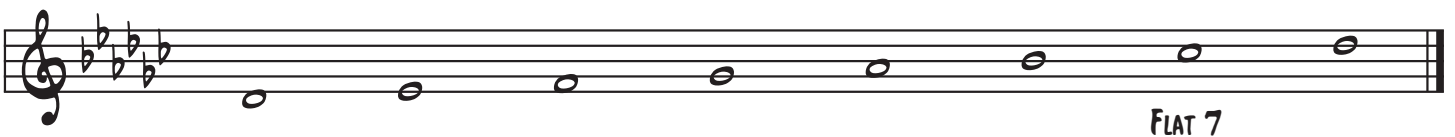
PHRYGIAN



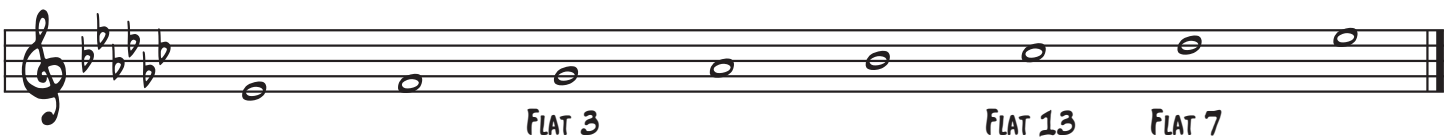
LYDIAN



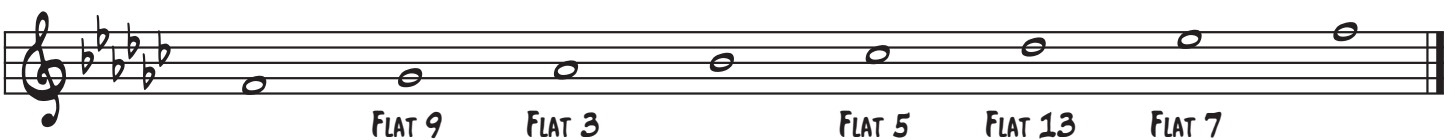
MIXOLYDIAN



AEOLIAN



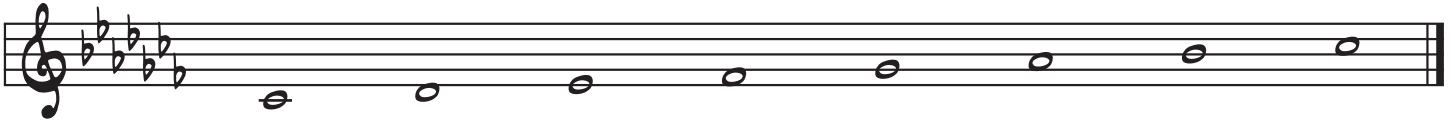
LOCRIAN



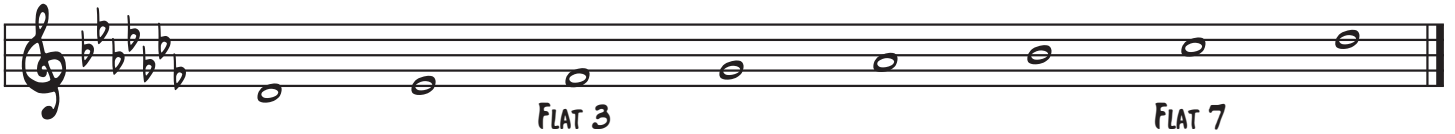
C \flat MAJOR MODES

IONIAN

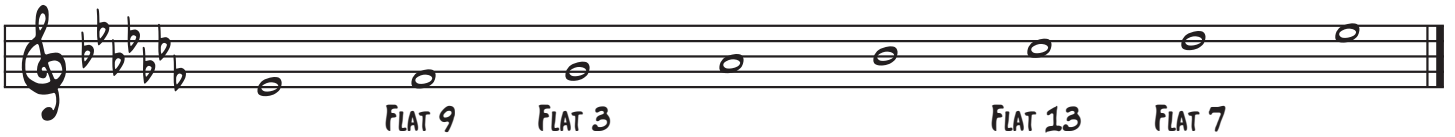
15



DORIAN



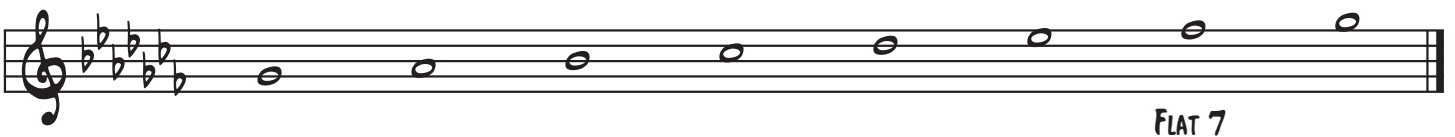
PHRYGIAN



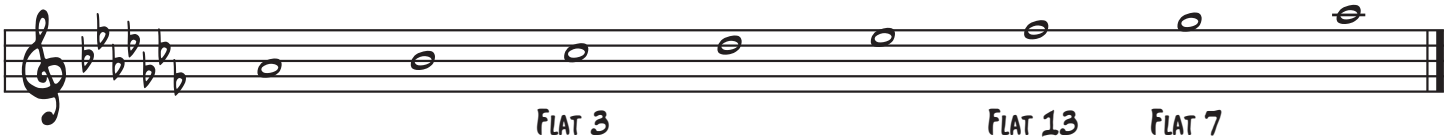
LYDIAN



MIXOLYDIAN



AEOLIAN



LOCRIAN

