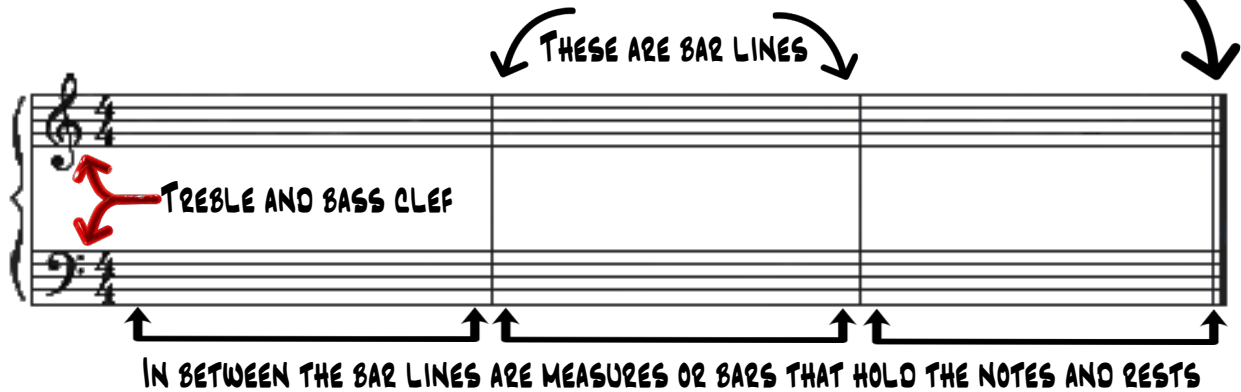


# RHYTHM PART 2

## TIME SIGNATURES

THIS IS THE STAFF

THIS IS A DOUBLE BAR LINE WHICH INDICATES THE END OF THE PIECE



THIS IS THE TIME SIGNATURE



4  
4

THE TOP NUMBER TELLS US HOW MANY BEATS THERE ARE IN A BAR

THE BOTTOM NUMBER TELLS US WHAT TYPE OF NOTE GETS THE BEAT

2  
4

TWO BEATS IN THE BAR AND THE QUARTER NOTE GETS THE BEAT

2  
8

TWO BEATS IN THE BAR AND THE EIGHTH NOTE GETS THE BEAT

3  
4

THREE BEATS IN THE BAR AND THE QUARTER NOTE GETS THE BEAT

3  
8

THREE BEATS IN THE BAR AND THE EIGHTH NOTE GETS THE BEAT

4  
4

FOUR BEATS IN THE BAR AND THE QUARTER NOTE GETS THE BEAT

4  
8

FOUR BEATS IN THE BAR AND THE EIGHTH NOTE GETS THE BEAT

THERE ARE THREE GROUPS OF TIME SIGNATURES WHICH WILL BE DISCUSSED

### SIMPLE DUPLER TIME SIGNATURES



THE TOP NUMBER IS A TWO AND ALL THE BOTTOM NUMBERS CHANGE VALUES

### SIMPLE TRIPLE TIME SIGNATURES

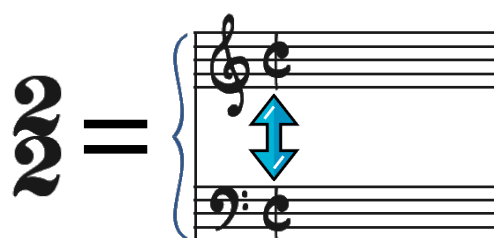
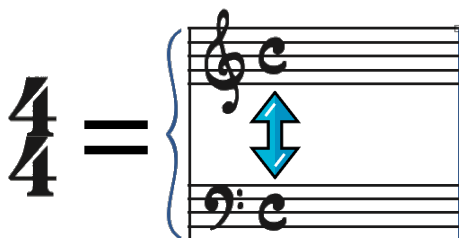


THE TOP NUMBER IS A THREE AND ALL THE BOTTOM NUMBERS CHANGE VALUES

### SIMPLE QUADRUPLER TIME SIGNATURES



THE TOP NUMBER IS A FOUR AND ALL THE BOTTOM NUMBERS CHANGE VALUES



4/4 IS ALSO WRITTEN AS COMMON TIME

2/2 IS ALSO WRITTEN AS CUT TIME

# HOW TO WRITE RESTS IN TRIPLE TIME SIGNATURES

HERE ARE OUR TRIPLE TIME SIGNATURES



IF THERE IS A NOTE AT THE BEGINNING OF THE BAR,  
YOU CAN FINISH THE BAR WITH TWO RESTS



IT IS INCORRECT TO COMBINE THESE TWO RESTS



IF THERE IS A NOTE AT THE END OF THE BAR,  
YOU CAN START THE BAR WITH TWO RESTS OR COMBINE THOSE RESTS

I FIND THIS RULE A LITTLE CONFUSING SOMETIME AND I USUALLY  
TELL MY STUDENTS TO ALWAYS WRITE THE RESTS INDIVIDUALLY  
AND DON'T COMBINE THEM AT ALL THEN THEY WILL ALWAYS BE RIGHT

PREFERRED



PREFERRED



PREFERRED



IN SIMPLE QUADRUPLER TIME, THE BEATS ARE STRONG, WEAK, MEDIUM WEAK

S w M w S w M w

S w M w S w M w

S w M w S w M w

WE WILL NOT COMBINE THE WEAK BEAT AND MEDIUM BEAT IN ONE REST