

# RHYTHM PART 1

IN THE RHYTHM TUTORIAL WE DISCUSSED THE DIFFERENT TYPES OF NOTES. THIS IS A SUMMARY OF THE NAMES OF THOSE NOTES.



WHOLE NOTE



HALF NOTE



QUARTER NOTE

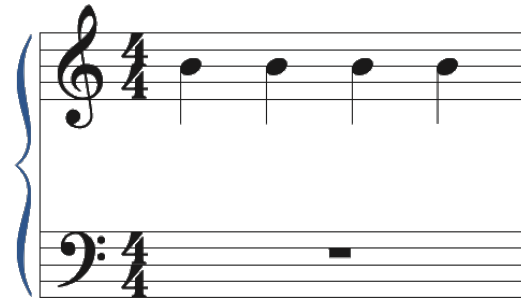
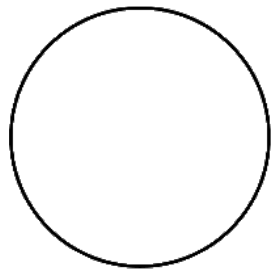


EIGHTH NOTE

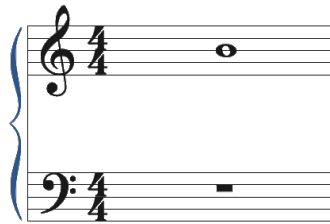
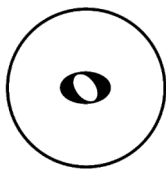


SIXTEENTH NOTE

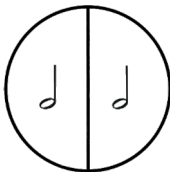
# A WHOLE PIE EQUALS A BAR IN 4/4. THERE ARE FOUR QUARTER NOTES IN 4/4



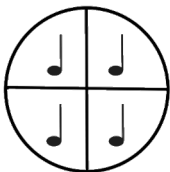
EVERYONE OF THESE PIES EQUALS FOUR BEATS THEREFORE...



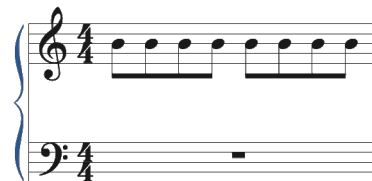
A WHOLE NOTE EQUALS FOUR BEATS.  
ONE WHOLE NOTE COMPLETES THE BAR.



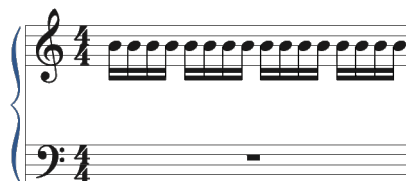
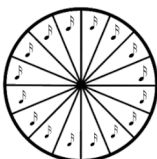
A HALF NOTE EQUALS TWO BEATS.  
TWO HALF NOTES COMPLETE THE BAR.




A QUARTER NOTE EQUALS ONE BEAT.  
FOUR QUARTER NOTES COMPLETE THE BAR.





AN EIGHTH NOTE EQUALS A HALF OF A BEAT.  
EIGHT EIGHTH NOTES COMPLETE THE BAR.





A SIXTEENTH NOTE EQUALS A QUARTER OF A BEAT.  
SIXTEEN SIXTEENTH NOTES COMPLETE THE BAR.

 THIS IS A .....NOTE

 THIS IS A .....NOTE

 THIS IS A .....NOTE

 THIS IS A .....NOTE

 THIS IS A .....NOTE

 = .....BEATS

 = .....BEATS

 = .....BEATS

 = .....BEATS

 = .....BEATS

## ADD ONE NOTE TO COMPLETE THE EQUATION

 + \_\_\_\_\_ = 6 BEATS       + \_\_\_\_\_ = 8 BEATS       + \_\_\_\_\_ = 5 BEATS

 + \_\_\_\_\_ = 1/2 BEAT       + \_\_\_\_\_ = 2 1/2 BEATS       + \_\_\_\_\_ = 2 1/4 BEATS

 + \_\_\_\_\_ = 1 1/2 BEATS       + \_\_\_\_\_ = 3 BEATS       + \_\_\_\_\_ = 3 BEATS