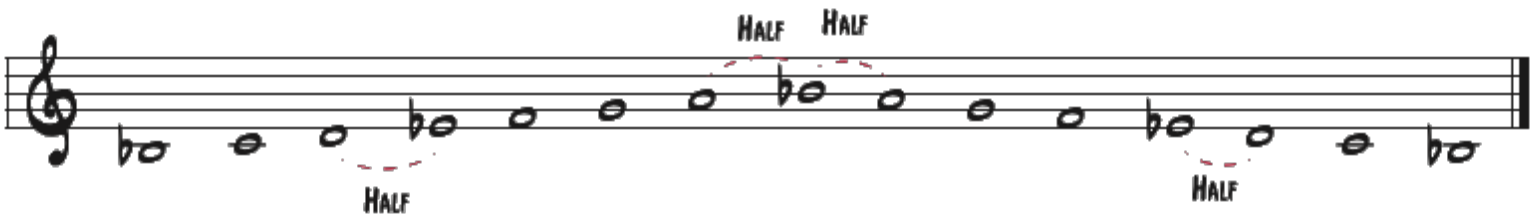


TUTORIAL #7

KEY SIGNATURES

WHEN WE MADE A MAJOR SCALE WE WROTE THE SHARP OR FLAT ON EVERY NOTE ASCENDING AND DESCENDING



A KEY SIGNATURE GATHERS ALL THOSE SHARPS AND FLATS TOGETHER MAKING INDIVIDUAL ACCIDENTALS NOT NECESSARY



THE KEY SIGNATURE TELLS US WHAT MAJOR OR MINOR SCALE WE WILL BE IN
THE ORDER OF SHARPS AND FLATS ARE ALWAYS THE SAME
FOR NOW, WE WILL DEAL WITH FOUR SHARP AND FOUR FLAT KEYS

THE ORDER OF SHARPS IS F# C# G# D#



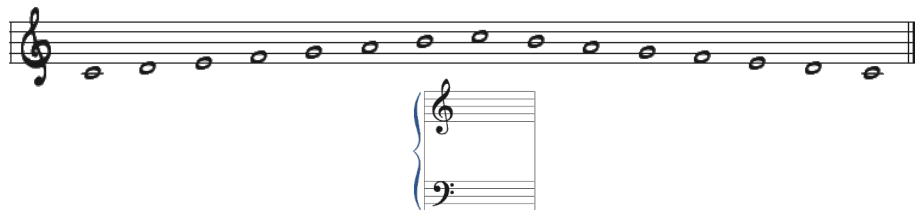
THEY MUST BE IN THIS ORDER AND ON THESE EXACT LINES OR SPACES

THE ORDER OF FLATS IS Bb Eb Ab Db



ACCOMPANYING SCALES TO KEY SIGNATURES

C MAJOR SCALE-NO FLATS OR SHARPS



G MAJOR SCALE-ONE SHARP



F MAJOR SCALE-ONE FLAT



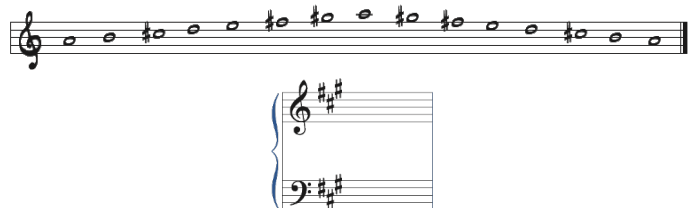
D MAJOR SCALE-TWO SHARPS



Bb MAJOR SCALE-TWO FLATS



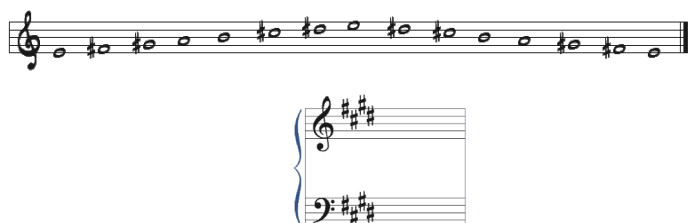
A MAJOR SCALE-THREE SHARPS



Eb MAJOR SCALE-THREE FLATS



E MAJOR SCALE-FOUR SHARPS



Ab MAJOR SCALE-FOUR FLATS

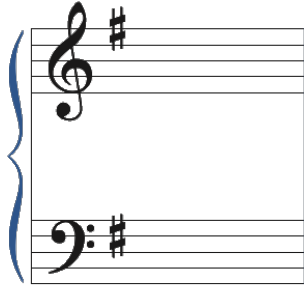


CUE CARDS

PRINT AND CUT OUT THESE CUE CARDS

WRITE THE CORRECT KEYS ON THE BACKS

DRILL THESE KEYS UNTIL THEY ARE MEMORIZED



WRITE THE FOLLOWING KEY SIGNATURES



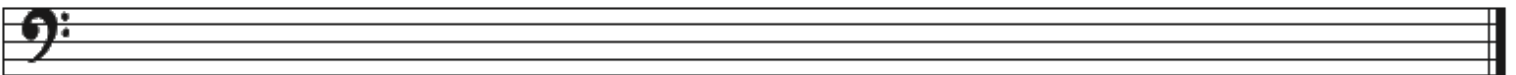
D MAJOR F MAJOR G MAJOR A♭ MAJOR E MAJOR E♭ MAJOR A MAJOR B♭ MAJOR



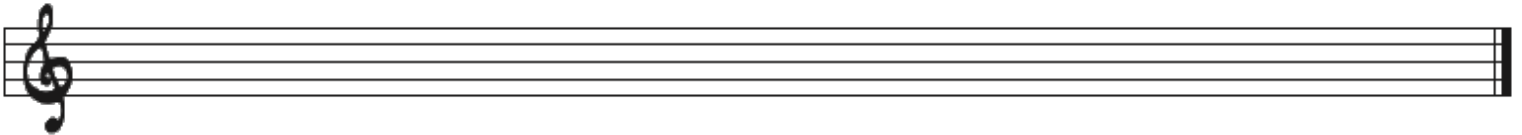
C MAJOR D MAJOR F MAJOR A MAJOR A♭ MAJOR E MAJOR B♭ MAJOR G MAJOR E♭ MAJOR

WRITE THE FOLLOWING SCALES, ASCENDING AND DESCENDING, USING A KEY SIGNATURE

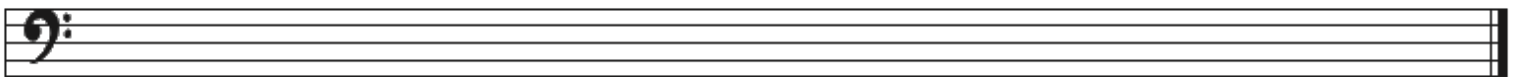
1. E MAJOR



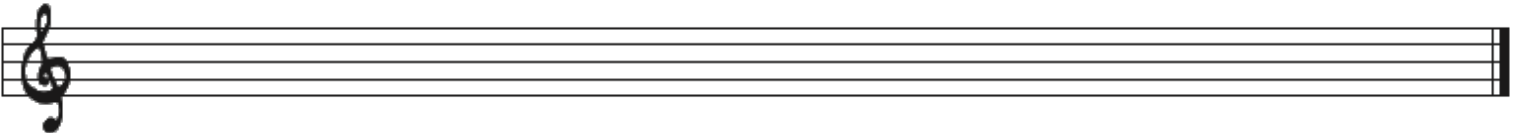
2. C MAJOR



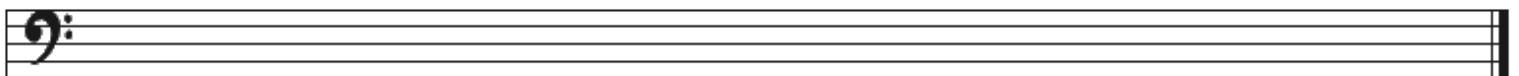
3. B♭ MAJOR



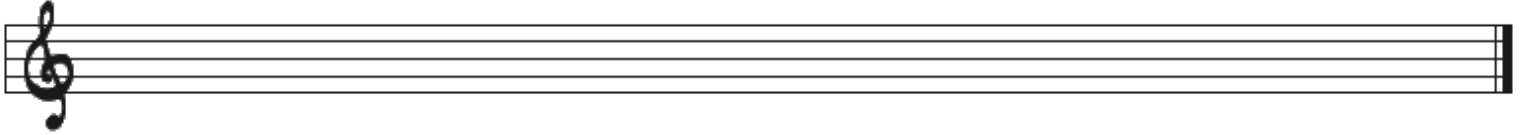
4. F MAJOR



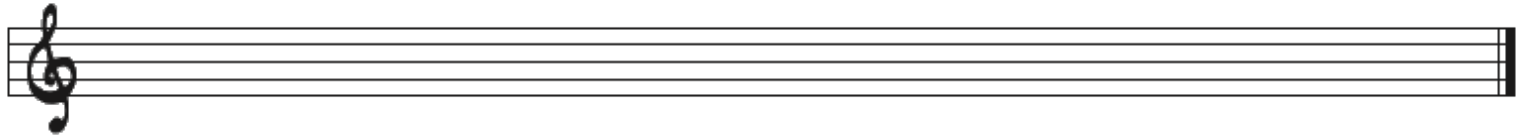
5. G MAJOR



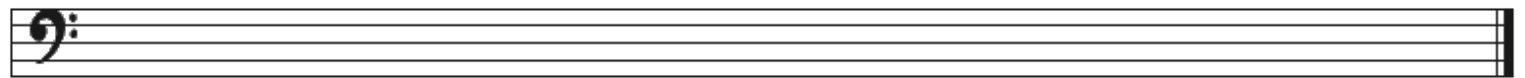
6. E \flat MAJOR



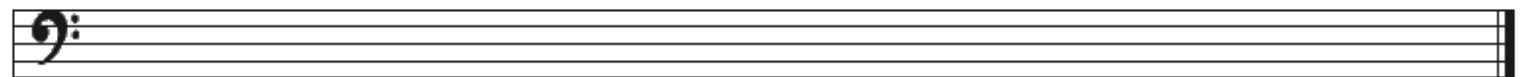
7. A MAJOR



8. D MAJOR



9. A \flat MAJOR



**NAME THE ACCIDENTALS IN THE FOLLOWING SCALES
AND MAKE SURE YOU WRITE THEM IN THE CORRECT ORDER**

1. A \flat MAJOR _____

2. E MAJOR _____

3. C MAJOR _____

4. E \flat MAJOR _____

5. B \flat MAJOR _____

6. D MAJOR _____

7. F MAJOR _____

8. A MAJOR _____

9. G MAJOR _____