

# INTERVALS : PART 1 - PERFECT AND MAJOR

AN INTERVAL IS THE DISTANCE BETWEEN TWO NOTES

WE'LL NUMBER THE NOTES FOR NOW AND  
USE THE C MAJOR SCALE AS AN EXAMPLE

WE ALWAYS COUNT FROM THE ROOT OR BOTTOM NOTE

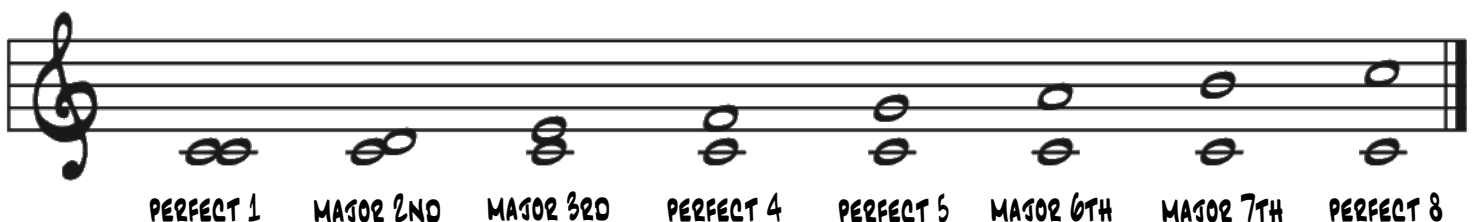


ONCE WE NUMBER THE INTERVALS WE THEN STATE THE TYPE OF INTERVAL

THE INTERVALS OF 1, 4, 5, AND 8 IN THE MAJOR SCALE ARE ALL PERFECT  
THE INTERVALS OF 2, 3, 6, AND 7 IN THE MAJOR SCALE ARE MAJOR

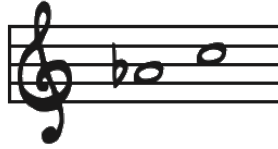
1	2	3	4	5	6	7	8
PERFECT 1	MAJOR 2ND	MAJOR 3RD	PERFECT 4TH	PERFECT 5TH	MAJOR 6TH	MAJOR 7TH	PERFECT OCTAVE

## MAJOR SCALE INTERVALS



## WE WILL TRY QUESTIONS IN DIFFERENT KEYS

WHAT IS THIS INTERVAL?



WE FIRST HAVE TO START WITH THE MAJOR SCALE  
THE BOTTOM NOTE IS IN Ab SO WE START WITH THE Ab MAJOR SCALE



Ab IS THE BOTTOM NOTE AND C IS THE TOP NOTE  
C IS THE 3RD NOTE IN THE MAJOR SCALE THEREFORE  
Ab TO C IS AN INTERVAL OF A MAJOR 3RD

\* THE BOTTOM NOTE IS THE KEY AND FROM THERE WE FIGURE OUT  
THE NUMBER AND TYPE OF INTERVAL

WHAT IS THIS INTERVAL?



THE BOTTOM NOTE IS F SO WE ARE IN THE F MAJOR SCALE  
E IS THE SEVENTH DEGREE OF THE F MAJOR SCALE  
SO THIS INTERVAL IS A MAJOR 7TH



# INTERVALS PART 1

NAME EACH OF THE FOLLOWING INTERVALS

EXAMPLE

A musical staff in treble clef showing eight pairs of notes representing intervals: Perfect Unison (C-C), Major 2nd (C-D), Major 3rd (C-E), Perfect 4th (C-F), Perfect 5th (C-G), Major 6th (C-A), Major 7th (C-B), and Perfect 8th (C-C).

1.

A musical staff in treble clef showing seven pairs of notes: Major 2nd (C-D), Major 3rd (C-E), Perfect 4th (C-F), Perfect 5th (C-G), Major 6th (C-A), Major 7th (C-B), and Perfect 8th (C-C).

2.

A musical staff in bass clef showing seven pairs of notes: Major 2nd (G-A), Major 3rd (G-B), Perfect 4th (G-C), Perfect 5th (G-D), Major 6th (G-E), Major 7th (G-F), and Perfect 8th (G-G).

WRITE AND NAME THE INTERVALS FOR THE FOLLOWING KEYS SIMILAR TO THE ABOVE EXERCISE

3.

A musical staff in treble clef showing seven pairs of notes with flats: Major 2nd (Bb-Cb), Major 3rd (Bb-Db), Perfect 4th (Bb-Eb), Perfect 5th (Bb-Fb), Major 6th (Bb-Ab), Major 7th (Bb-Gb), and Perfect 8th (Bb-Bb).

4.

A musical staff in bass clef showing seven pairs of notes with flats: Major 2nd (Fb-Gb), Major 3rd (Fb-Ab), Perfect 4th (Fb-Cb), Perfect 5th (Fb-Db), Major 6th (Fb-Eb), Major 7th (Fb-Fb), and Perfect 8th (Fb-Fb).

WRITE THE INTERVALS ABOVE THE GIVEN NOTES AND DON'T FORGET ACCIDENTALS

5.

A musical staff in treble clef showing seven pairs of notes with flats: Major 3rd (Bb-Db), Perfect 5th (Bb-Fb), Major 7th (Bb-Gb), Perfect 8th (Bb-Bb), Major 6th (Bb-Ab), Perfect 4th (Bb-Eb), and Major 2nd (Bb-Cb).

6.

A musical staff in bass clef showing seven pairs of notes: Perfect 4th (G-C), Major 2nd (G-A), Major 7th (G-F), Perfect 5th (G-D), Major 3rd (G-B), Major 6th (G-E), and Perfect Unison (G-G).

NAME EACH OF THE INTERVALS

7.

8.

9.

WRITE THE FOLLOWING INTERVALS ABOVE THE GIVEN NOTES

10.

MAJOR 6TH      PERFECT UNISON      PERFECT 4TH      MAJOR 2ND      PERFECT 8      MAJOR 3RD

11.

PERFECT 5TH      MAJOR 2ND      PERFECT 4TH      MAJOR 7TH      MAJOR 3RD      MAJOR 6TH

12.

MAJOR 7TH      PERFECT UNISON      PERFECT 5TH      MAJOR 2ND      PERFECT 8      MAJOR 3RD

13.

MAJOR 6TH      MAJOR 3RD      PERFECT 4TH      MAJOR 2ND      MAJOR 7TH      PERFECT 5TH